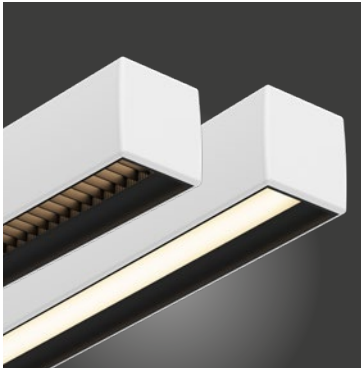


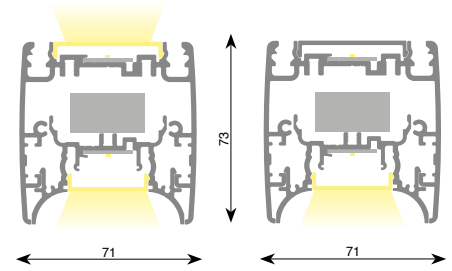
LEDliner70 Down + Up&Down / Ready-To-Go

Technical Datasheet

DOXIS
LIGHTING FACTORY



General specs	
Type	Down: Suspended / Ceiling mounted Up&Down: Suspended 1 or 2 circuits
Material	Profile: Aluminium Cover Up: Acrylate (PMMA) Cover Down: Polycarbonate (PC)
Lightsource	Philips Fortimo LED modules
Dimmable	Non dim / 1-10V dim / Touch&DALI dim
Weight	Average weight of equipped profile: 4.30kg/m
Cover	Opal / UGR grid



IP20



RoHS



Information

Rectangle aluminium extruded profile 71x73mm in Down (suspended or ceiling mounted) and Up&Down (suspended 1 or 2 circuits) version. Strong attention is given to thermal management (reduction of heat), equal light distribution and glare reduction (UGR grid). LEDliner70 offers the latest and best performing LED lighting technology using Philips LED Lines.

Mounting Methods

Down - Suspended	Down - Ceiling Mounted	Up&Down - Susp. 1circuit	Up&Down - Susp. 2 circuits
<p>Included</p> <ul style="list-style-type: none"> Profile Top cover End Caps LED Modules PC Cover Down / Ugr Grid down Suspension cables (2000mm) Connecting box Textile power cable (2000mm) 	<p>Included</p> <ul style="list-style-type: none"> Profile End Caps LED Modules PC Cover Down / Ugr Grid down 	<p>Included</p> <ul style="list-style-type: none"> Profile Top cover End Caps LED Modules LED Modules PC Cover Down / Ugr Grid down Suspension cables (2000mm) Connecting box Textile power cable (2000mm) 	<p>Included</p> <ul style="list-style-type: none"> Profile Top cover End Caps LED Modules LED Modules PC Cover Down / Ugr Grid down Suspension cables (2000mm) Connecting box Textile power cable (2000mm)

Suspension types



Invisible suspension (internal)
Optional



Invisible suspension
Optional

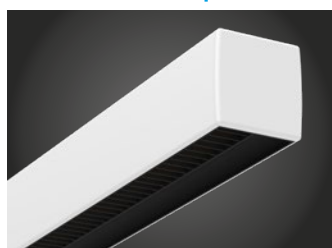


Standard suspension (bracket)
Standard included for suspended Ready-to-go profiles

LEDliner70 UGR Color possibilities



01 White Matt Texture Standard



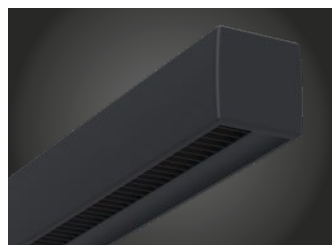
05 White + Black Matt Texture Standard



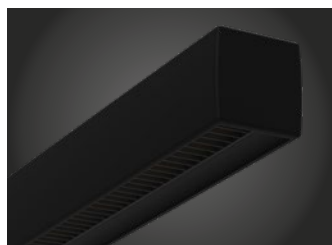
18 Grey Matt Texture Standard



28 Grey + Black Matt Texture Standard



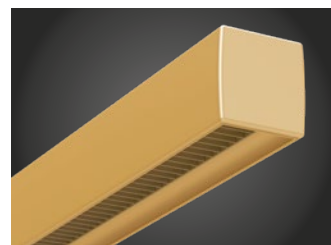
07 Anthracite Matt Texture Standard



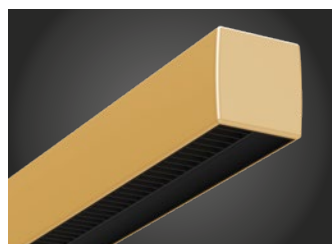
03 Black Matt Texture Standard



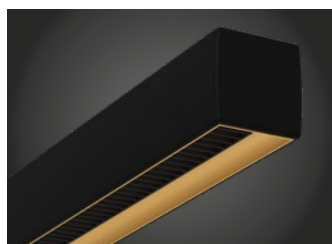
25 Smoked Brown Matt Texture Standard



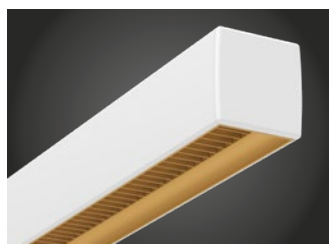
16 Gold Matt*



32 Gold + Black Matt T2



11 Black + Gold Matt



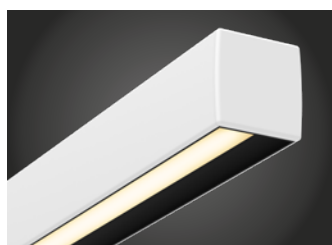
12 White + Gold Matt*

* Color 12 & 16 UGR values will raise when using gold painted grids.
Other RAL colors on request

LEDliner70 Opal Color possibilities



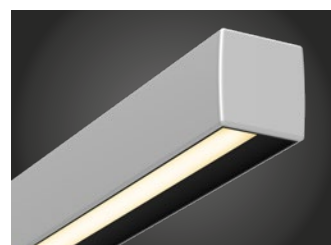
01 White Matt Texture Standard



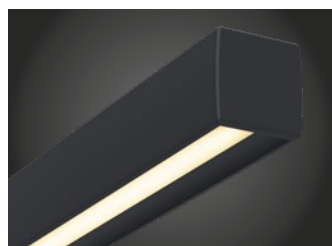
05 White + Black Matt Texture Standard



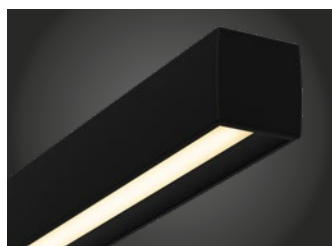
18 Grey Matt Texture Standard



28 Grey + Black Matt Texture Standard



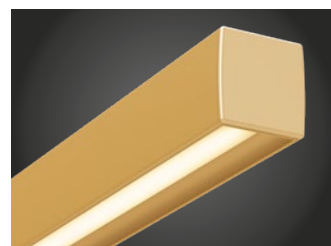
07 Anthracite Matt Texture Standard



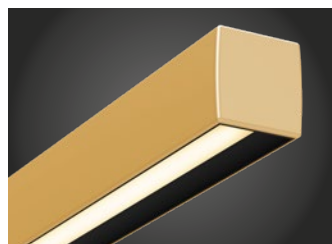
03 Black Matt Texture Standard



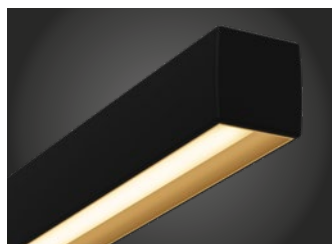
25 Smoked Brown Matt Texture Standard



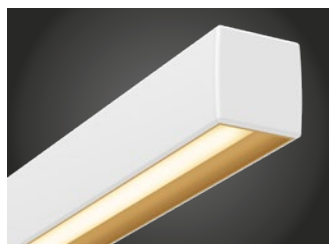
16 Gold Matt



32 Gold + Black Matt T2



11 Black + Gold Matt



12 White + Gold Matt

Other RAL colors on request

Article number composition

MM = Mounting method
SU: Down - Suspended
CM: Down - Ceiling Mounted

R70 = Ready To Go LEDliner70

Available colors
Matt White Texture R7000.00.000.**01.00**
Matt Black Texture R7000.00.000.**03.00**
Matt Grey 9006 Text. R7000.00.000.**18.00**
Matt Anthracite Text. R7000.00.000.**07.00**
Other colors on request.

xx = Color Code

R70MM.DM.CCC.xx-00

DM = Dim method

24: Non dimmable
25: 1-10V dimmable
26: Touch & DALI dim.

CCC = CRI + CCT

830: Ra80 - 3000K
840: Ra80 - 4000K
927: Ra90 - 2700K (Only available in limited lengths)
930: Ra90 - 3000K
940: Ra90 - 4000K
TW: Tunable white 2700-6500K (Only available in limited lengths)
Size (Doxis reference)

LEDliner70 Down - Ready To Go - 3000K Ra80

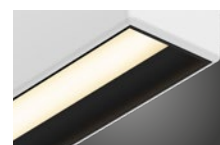
Article nr.	CCT - CRI	Length Total**	Lengths Individual**	Lum. Flux LED Module*	Power LED Module	Lum. Flux Luminaire*	Power Luminaire
R70MM.DM.830.xx.06	3000K - Ra80	879 mm	-	3132 lm	18.6 W	available september 2021	20.9 W
R70MM.DM.830.xx.07	3000K - Ra80	1021 mm	-	3654 lm	21.7 W	available september 2021	24.3 W
R70MM.DM.830.xx.08	3000K - Ra80	1159 mm	-	4176 lm	24.8 W	available september 2021	27.8 W
R70MM.DM.830.xx.09	3000K - Ra80	1301 mm	-	4698 lm	27.9 W	available september 2021	31.3 W
R70MM.DM.830.xx.10	3000K - Ra80	1441 mm	-	5220 lm	31 W	available september 2021	34.8 W
R70MM.DM.830.xx.11	3000K - Ra80	1583 mm	-	5742 lm	34.1 W	available september 2021	38.2 W
R70MM.DM.830.xx.12	3000K - Ra80	1721 mm	-	6264 lm	37.2 W	available september 2021	41.7 W
R70MM.DM.830.xx.13	3000K - Ra80	1863 mm	-	6786 lm	40.3 W	available september 2021	45.2 W
R70MM.DM.830.xx.14	3000K - Ra80	2002 mm	-	7308 lm	43.4 W	available september 2021	48.7 W
R70MM.DM.830.xx.15	3000K - Ra80	2144 mm	-	7830 lm	46.5 W	available september 2021	52.1 W
R70MM.DM.830.xx.16	3000K - Ra80	2282 mm	-	8352 lm	49.6 W	available september 2021	55.6 W
R70MM.DM.830.xx.17	3000K - Ra80	2424 mm	-	8874 lm	52.7 W	available september 2021	59.1 W
R70MM.DM.830.xx.18	3000K - Ra80	2564 mm	-	9396 lm	55.8 W	available september 2021	62.6 W
R70MM.DM.830.xx.19	3000K - Ra80	2706 mm	-	9918 lm	58.9 W	available september 2021	66 W
R70MM.DM.830.xx.20	3000K - Ra80	2844 mm	-	10440 lm	62 W	available september 2021	69.5 W
R70MM.DM.830.xx.21	3000K - Ra80	2986 mm	-	10962 lm	65.1 W	available september 2021	73 W
R70MM.DM.830.xx.22	3000K - Ra80	3125 mm	-	11484 lm	68.2 W	available september 2021	76.5 W
R70MM.DM.830.xx.23	3000K - Ra80	3267 mm	-	12006 lm	71.3 W	available september 2021	79.9 W
R70MM.DM.830.xx.24	3000K - Ra80	3405 mm	-	12528 lm	74.4 W	available september 2021	83.4 W
R70MM.DM.830.xx.25	3000K - Ra80	3548 mm	1701 + 1843 mm	13050 lm	77.5 W	available september 2021	86.9 W
R70MM.DM.830.xx.26	3000K - Ra80	3687 mm	1701 + 1982 mm	13572 lm	80.6 W	available september 2021	90.4 W
R70MM.DM.830.xx.27	3000K - Ra80	3829 mm	1843 + 1982 mm	14094 lm	83.7 W	available september 2021	93.8 W
R70MM.DM.830.xx.28	3000K - Ra80	3968 mm	1982 + 1982 mm	14616 lm	86.8 W	available september 2021	97.3 W
R70MM.DM.830.xx.29	3000K - Ra80	4110 mm	1982 + 2125 mm	15138 lm	89.9 W	available september 2021	100.8 W
R70MM.DM.830.xx.30	3000K - Ra80	4248 mm	1982 + 2262 mm	15660 lm	93 W	available september 2021	104.3 W
R70MM.DM.830.xx.31	3000K - Ra80	4390 mm	2125 + 2262 mm	16182 lm	96.1 W	available september 2021	107.7 W
R70MM.DM.830.xx.32	3000K - Ra80	4528 mm	2262 + 2262 mm	16704 lm	99.2 W	available september 2021	111.2 W
R70MM.DM.830.xx.33	3000K - Ra80	4670 mm	2262 + 2405 mm	17226 lm	102.3 W	available september 2021	114.7 W
R70MM.DM.830.xx.34	3000K - Ra80	4810 mm	2262 + 2544 mm	17748 lm	105.4 W	available september 2021	118.2 W
R70MM.DM.830.xx.35	3000K - Ra80	4952 mm	2405 + 2544 mm	18270 lm	108.5 W	available september 2021	121.6 W
R70MM.DM.830.xx.36	3000K - Ra80	5091 mm	2544 + 2544 mm	18792 lm	111.6 W	available september 2021	125.1 W
R70MM.DM.830.xx.37	3000K - Ra80	5233 mm	2544 + 2686 mm	19314 lm	114.7 W	available september 2021	128.6 W
R70MM.DM.830.xx.38	3000K - Ra80	5371 mm	2544 + 2824 mm	19836 lm	117.8 W	available september 2021	132.1 W
R70MM.DM.830.xx.39	3000K - Ra80	5513 mm	2544 + 2966 mm	20358 lm	120.9 W	available september 2021	135.5 W
R70MM.DM.830.xx.40	3000K - Ra80	5653 mm	2544 + 3105 mm	20880 lm	124 W	available september 2021	139 W
R70MM.DM.830.xx.41	3000K - Ra80	5795 mm	2544 + 3248 mm	21402 lm	127.1 W	available september 2021	142.5 W
R70MM.DM.830.xx.42	3000K - Ra80	5933 mm	2824 + 3105 mm	21924 lm	130.2 W	available september 2021	146 W
R70MM.DM.830.xx.43	3000K - Ra80	6075 mm	2966 + 3105 mm	22446 lm	133.3 W	available september 2021	149.4 W
R70MM.DM.830.xx.44	3000K - Ra80	6214 mm	3105 + 3105 mm	22968 lm	136.4 W	available september 2021	152.9 W
R70MM.DM.830.xx.45	3000K - Ra80	6356 mm	3105 + 3248 mm	23490 lm	139.5 W	available september 2021	156.4 W
R70MM.DM.830.xx.46	3000K - Ra80	6494 mm	3105 + 3385 mm	24012 lm	142.6 W	available september 2021	159.9 W
R70MM.DM.830.xx.47	3000K - Ra80	6636 mm	3248 + 3385 mm	24534 lm	145.7 W	available september 2021	163.3 W
R70MM.DM.830.xx.48	3000K - Ra80	6774 mm	3385 + 3385 mm	25056 lm	148.8 W	available september 2021	166.8 W

General specs

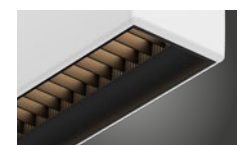
	LED Module	Luminaire
Efficacy 3000K - Ra80	168.4lm/W	n/a
Efficacy 4000K - Ra80	177.4lm/W	n/a
Efficacy 2700K - Ra90	131.8lm/W	n/a
Efficacy 3000K - Ra90	134lm/W	n/a
Efficacy 4000K - Ra90	141.1lm/W	n/a
Color consistency	SDCM 3	
Photobiological safety	Risk Group 1	
Power factor	0.9	

Lumen Maintenance

L70	B50	>70000 hrs
	B20	>70000 hrs
	B10	>70000 hrs
L80	B50	>70000 hrs
	B20	65000 hrs
	B10	60000 hrs
L90	B50	35000 hrs
	B20	35000 hrs
	B10	30000 hrs



Opal cover (standard)
R70.00.000.xx.00



UGR Grid
R7000.00.000.xx.00.G

Luminous flux for LEDliner70 with UGR grid(down only) is ca. lower than with standard opal cover.
Please add ".G" to the article number for the UGR Grid version.

* Depending on the finish a luminous flux decrease up to 18% is possible relative to the luminous flux when opting for standard matt white texture powdercoated profiles.

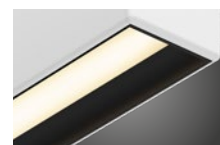
** The max. length of a single piece of profile is 3405mm. Ready to go-profiles with a length higher than 3405mm consist of 2 individual piece connected with a 180° mechanical connector
Total length is the length with end caps included, individual lengths are lengths with the end cap excluded.

LEDliner70 Down - Ready To Go - 4000K Ra80

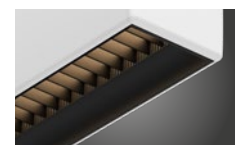
Article nr.	CCT - CRI	Length Total**	Lengths Individual**	Lum. Flux LED Module*	Power LED Module	Lum. Flux Luminaire*	Power Luminaire
R70MM.DM.840.xx.06	4000K - Ra80	879 mm	-	3300 lm	18.6 W	available september 2021	20.9 W
R70MM.DM.840.xx.07	4000K - Ra80	1021 mm	-	3850 lm	21.7 W	available september 2021	24.3 W
R70MM.DM.840.xx.08	4000K - Ra80	1159 mm	-	4400 lm	24.8 W	available september 2021	27.8 W
R70MM.DM.840.xx.09	4000K - Ra80	1301 mm	-	4950 lm	27.9 W	available september 2021	31.3 W
R70MM.DM.840.xx.10	4000K - Ra80	1441 mm	-	5500 lm	31 W	available september 2021	34.8 W
R70MM.DM.840.xx.11	4000K - Ra80	1583 mm	-	6050 lm	34.1 W	available september 2021	38.2 W
R70MM.DM.840.xx.12	4000K - Ra80	1721 mm	-	6600 lm	37.2 W	available september 2021	41.7 W
R70MM.DM.840.xx.13	4000K - Ra80	1863 mm	-	7150 lm	40.3 W	available september 2021	45.2 W
R70MM.DM.840.xx.14	4000K - Ra80	2002 mm	-	7700 lm	43.4 W	available september 2021	48.7 W
R70MM.DM.840.xx.15	4000K - Ra80	2144 mm	-	8250 lm	46.5 W	available september 2021	52.1 W
R70MM.DM.840.xx.16	4000K - Ra80	2282 mm	-	8800 lm	49.6 W	available september 2021	55.6 W
R70MM.DM.840.xx.17	4000K - Ra80	2424 mm	-	9350 lm	52.7 W	available september 2021	59.1 W
R70MM.DM.840.xx.18	4000K - Ra80	2564 mm	-	9900 lm	55.8 W	available september 2021	62.6 W
R70MM.DM.840.xx.19	4000K - Ra80	2706 mm	-	10450 lm	58.9 W	available september 2021	66 W
R70MM.DM.840.xx.20	4000K - Ra80	2844 mm	-	11000 lm	62 W	available september 2021	69.5 W
R70MM.DM.840.xx.21	4000K - Ra80	2986 mm	-	11550 lm	65.1 W	available september 2021	73 W
R70MM.DM.840.xx.22	4000K - Ra80	3125 mm	-	12100 lm	68.2 W	available september 2021	76.5 W
R70MM.DM.840.xx.23	4000K - Ra80	3267 mm	-	12650 lm	71.3 W	available september 2021	79.9 W
R70MM.DM.840.xx.24	4000K - Ra80	3405 mm	-	13200 lm	74.4 W	available september 2021	83.4 W
R70MM.DM.840.xx.25	4000K - Ra80	3548 mm	1701 + 1843 mm	13750 lm	77.5 W	available september 2021	86.9 W
R70MM.DM.840.xx.26	4000K - Ra80	3687 mm	1701 + 1982 mm	14300 lm	80.6 W	available september 2021	90.4 W
R70MM.DM.840.xx.27	4000K - Ra80	3829 mm	1843 + 1982 mm	14850 lm	83.7 W	available september 2021	93.8 W
R70MM.DM.840.xx.28	4000K - Ra80	3968 mm	1982 + 1982 mm	15400 lm	86.8 W	available september 2021	97.3 W
R70MM.DM.840.xx.29	4000K - Ra80	4110 mm	1982 + 2125 mm	15950 lm	89.9 W	available september 2021	100.8 W
R70MM.DM.840.xx.30	4000K - Ra80	4248 mm	1982 + 2262 mm	16500 lm	93 W	available september 2021	104.3 W
R70MM.DM.840.xx.31	4000K - Ra80	4390 mm	2125 + 2262 mm	17050 lm	96.1 W	available september 2021	107.7 W
R70MM.DM.840.xx.32	4000K - Ra80	4528 mm	2262 + 2262 mm	17600 lm	99.2 W	available september 2021	111.2 W
R70MM.DM.840.xx.33	4000K - Ra80	4670 mm	2262 + 2405 mm	18150 lm	102.3 W	available september 2021	114.7 W
R70MM.DM.840.xx.34	4000K - Ra80	4810 mm	2262 + 2544 mm	18700 lm	105.4 W	available september 2021	118.2 W
R70MM.DM.840.xx.35	4000K - Ra80	4952 mm	2405 + 2544 mm	19250 lm	108.5 W	available september 2021	121.6 W
R70MM.DM.840.xx.36	4000K - Ra80	5091 mm	2544 + 2544 mm	19800 lm	111.6 W	available september 2021	125.1 W
R70MM.DM.840.xx.37	4000K - Ra80	5233 mm	2544 + 2686 mm	20350 lm	114.7 W	available september 2021	128.6 W
R70MM.DM.840.xx.38	4000K - Ra80	5371 mm	2544 + 2824 mm	20900 lm	117.8 W	available september 2021	132.1 W
R70MM.DM.840.xx.39	4000K - Ra80	5513 mm	2544 + 2966 mm	21450 lm	120.9 W	available september 2021	135.5 W
R70MM.DM.840.xx.40	4000K - Ra80	5653 mm	2544 + 3105 mm	22000 lm	124 W	available september 2021	139 W
R70MM.DM.840.xx.41	4000K - Ra80	5795 mm	2544 + 3248 mm	22550 lm	127.1 W	available september 2021	142.5 W
R70MM.DM.840.xx.42	4000K - Ra80	5933 mm	2824 + 3105 mm	23100 lm	130.2 W	available september 2021	146 W
R70MM.DM.840.xx.43	4000K - Ra80	6075 mm	2966 + 3105 mm	23650 lm	133.3 W	available september 2021	149.4 W
R70MM.DM.840.xx.44	4000K - Ra80	6214 mm	3105 + 3105 mm	24200 lm	136.4 W	available september 2021	152.9 W
R70MM.DM.840.xx.45	4000K - Ra80	6356 mm	3105 + 3248 mm	24750 lm	139.5 W	available september 2021	156.4 W
R70MM.DM.840.xx.46	4000K - Ra80	6494 mm	3105 + 3385 mm	25300 lm	142.6 W	available september 2021	159.9 W
R70MM.DM.840.xx.47	4000K - Ra80	6636 mm	3248 + 3385 mm	25850 lm	145.7 W	available september 2021	163.3 W
R70MM.DM.840.xx.48	4000K - Ra80	6774 mm	3385 + 3385 mm	26400 lm	148.8 W	available september 2021	166.8 W

General specs		
	LED Module	Luminaire
Efficacy 3000K - Ra80	168.4lm/W	n/a
Efficacy 4000K - Ra80	177.4lm/W	n/a
Efficacy 2700K - Ra90	131.8lm/W	n/a
Efficacy 3000K - Ra90	134lm/W	n/a
Efficacy 4000K - Ra90	141.1lm/W	n/a
Color consistency	SDCM 3	
Photobiological safety	Risk Group 1	
Power factor	0.9	

Lumen Maintenance		
L70	B50	>70000 hrs
	B20	>70000 hrs
	B10	>70000 hrs
L80	B50	>70000 hrs
	B20	65000 hrs
	B10	60000 hrs
L90	B50	35000 hrs
	B20	35000 hrs
	B10	30000 hrs



Opal cover (standard)
R70.00.000.xx.00



UGR Grid
R7000.00.000.xx.00.G

Luminous flux for LEDliner70 with UGR grid(down only) is ca. lower than with standard opal cover.
Please add ".G" to the article number for the UGR Grid version.

* Depending on the finish a luminous flux decrease up to 18% is possible relative to the luminous flux when opting for standard matt white texture powdercoated profiles.

** The max. length of a single piece of profile is 3405mm. Ready to go-profiles with a length higher than 3405mm consist of 2 individual piece connected with a 180° mechanical connector
Total length is the length with end caps included, individual lengths are lengths with the end cap excluded.

LEDliner70 Down - Ready To Go - 2700K Ra90

Article nr.	CCT - CRI	Length Total**	Lengths Individual**	Lum. Flux LED Module*	Power LED Module	Lum. Flux Luminaire*	Power Luminaire
R70MM.DM.927.xx.06	2700K - Ra90	879 mm	-	3084 lm	23.4 W	available september 2021	26.2 W
R70MM.DM.927.xx.08	2700K - Ra90	1159 mm	-	4112 lm	31.2 W	available september 2021	35 W
R70MM.DM.927.xx.10	2700K - Ra90	1441 mm	-	5140 lm	39 W	available september 2021	43.7 W
R70MM.DM.927.xx.12	2700K - Ra90	1721 mm	-	6168 lm	46.8 W	available september 2021	52.5 W
R70MM.DM.927.xx.14	2700K - Ra90	2002 mm	-	7196 lm	54.6 W	available september 2021	61.2 W
R70MM.DM.927.xx.16	2700K - Ra90	2282 mm	-	8224 lm	62.4 W	available september 2021	69.9 W
R70MM.DM.927.xx.18	2700K - Ra90	2564 mm	-	9252 lm	70.2 W	available september 2021	78.7 W
R70MM.DM.927.xx.20	2700K - Ra90	2844 mm	-	10280 lm	78 W	available september 2021	87.4 W
R70MM.DM.927.xx.22	2700K - Ra90	3125 mm	-	11308 lm	85.8 W	available september 2021	96.2 W
R70MM.DM.927.xx.24	2700K - Ra90	3405 mm	-	12336 lm	93.6 W	available september 2021	104.9 W
R70MM.DM.927.xx.26	2700K - Ra90	3687 mm	1701 + 1982 mm	13364 lm	101.4 W	available september 2021	113.7 W
R70MM.DM.927.xx.28	2700K - Ra90	3968 mm	1982 + 1982 mm	14392 lm	109.2 W	available september 2021	122.4 W
R70MM.DM.927.xx.30	2700K - Ra90	4248 mm	1982 + 2262 mm	15420 lm	117 W	available september 2021	131.2 W
R70MM.DM.927.xx.32	2700K - Ra90	4528 mm	2262 + 2262 mm	16448 lm	124.8 W	available september 2021	139.9 W
R70MM.DM.927.xx.34	2700K - Ra90	4810 mm	2262 + 2544 mm	17476 lm	132.6 W	available september 2021	148.6 W
R70MM.DM.927.xx.36	2700K - Ra90	5091 mm	2544 + 2544 mm	18504 lm	140.4 W	available september 2021	157.4 W
R70MM.DM.927.xx.38	2700K - Ra90	5371 mm	2544 + 2824 mm	19532 lm	148.2 W	available september 2021	166.1 W
R70MM.DM.927.xx.40	2700K - Ra90	5653 mm	2544 + 3105 mm	20560 lm	156 W	available september 2021	174.9 W
R70MM.DM.927.xx.42	2700K - Ra90	5933 mm	2824 + 3105 mm	21588 lm	163.8 W	available september 2021	183.6 W
R70MM.DM.927.xx.44	2700K - Ra90	6214 mm	3105 + 3105 mm	22616 lm	171.6 W	available september 2021	192.4 W
R70MM.DM.927.xx.46	2700K - Ra90	6494 mm	3105 + 3385 mm	23644 lm	179.4 W	available september 2021	201.1 W
R70MM.DM.927.xx.48	2700K - Ra90	6774 mm	3385 + 3385 mm	24672 lm	187.2 W	available september 2021	209.8 W

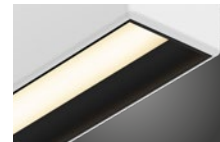
General specs

	LED Module	Luminaire
Efficacy 3000K - Ra80	168.4lm/W	n/a
Efficacy 4000K - Ra80	177.4lm/W	n/a
Efficacy 2700K - Ra90	131.8lm/W	n/a
Efficacy 3000K - Ra90	134lm/W	n/a
Efficacy 4000K - Ra90	141.1lm/W	n/a

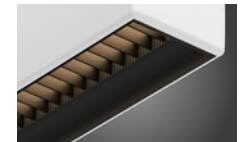
Color consistency	SDCM 3
Photobiological safety	Risk Group 1
Power factor	0.9

Lumen Maintenance

L70	B50	>70000 hrs
	B20	>70000 hrs
	B10	>70000 hrs
L80	B50	>70000 hrs
	B20	65000 hrs
	B10	60000 hrs
L90	B50	35000 hrs
	B20	35000 hrs
	B10	30000 hrs



Opal cover (standard)
R70.00.000.xx.00



UGR Grid
R7000.00.000.xx.00.G

Luminous flux for LEDliner70 with UGR grid(down only) is ca. lower than with standard opal cover.
Please add ".G" to the article number for the UGR Grid version.

* Depending on the finish a luminous flux decrease up to 18% is possible relative to the luminous flux when opting for standard matt white texture powdercoated profiles.

** The max. length of a single piece of profile is 3405mm. Ready to go-profiles with a length higher than 3405mm consist of 2 individual piece connected with a 180° mechanical connector
Total length is the length with end caps included, individual lengths are lengths with the end cap excluded.

LEDliner70 Down - Ready To Go - 3000K Ra90

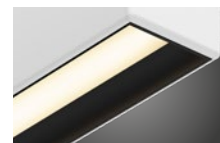
Article nr.	CCT - CRI	Length Total**	Lengths Individual**	Lum. Flux LED Module*	Power LED Module	Lum. Flux Luminaire*	Power Luminaire
R70MM.DM.930.xx.06	3000K - Ra90	879 mm	-	3132 lm	23.4 W	available september 2021	26.2 W
R70MM.DM.930.xx.07	3000K - Ra90	1021 mm	-	3654 lm	27.3 W	available september 2021	30.6 W
R70MM.DM.930.xx.08	3000K - Ra90	1159 mm	-	4176 lm	31.2 W	available september 2021	35 W
R70MM.DM.930.xx.09	3000K - Ra90	1301 mm	-	4698 lm	35.1 W	available september 2021	39.3 W
R70MM.DM.930.xx.10	3000K - Ra90	1441 mm	-	5220 lm	39 W	available september 2021	43.7 W
R70MM.DM.930.xx.11	3000K - Ra90	1583 mm	-	5742 lm	42.9 W	available september 2021	48.1 W
R70MM.DM.930.xx.12	3000K - Ra90	1721 mm	-	6264 lm	46.8 W	available september 2021	52.5 W
R70MM.DM.930.xx.13	3000K - Ra90	1863 mm	-	6786 lm	50.7 W	available september 2021	56.8 W
R70MM.DM.930.xx.14	3000K - Ra90	2002 mm	-	7308 lm	54.6 W	available september 2021	61.2 W
R70MM.DM.930.xx.15	3000K - Ra90	2144 mm	-	7830 lm	58.5 W	available september 2021	65.6 W
R70MM.DM.930.xx.16	3000K - Ra90	2282 mm	-	8352 lm	62.4 W	available september 2021	69.9 W
R70MM.DM.930.xx.17	3000K - Ra90	2424 mm	-	8874 lm	66.3 W	available september 2021	74.3 W
R70MM.DM.930.xx.18	3000K - Ra90	2564 mm	-	9396 lm	70.2 W	available september 2021	78.7 W
R70MM.DM.930.xx.19	3000K - Ra90	2706 mm	-	9918 lm	74.1 W	available september 2021	83.1 W
R70MM.DM.930.xx.20	3000K - Ra90	2844 mm	-	10440 lm	78 W	available september 2021	87.4 W
R70MM.DM.930.xx.21	3000K - Ra90	2986 mm	-	10962 lm	81.9 W	available september 2021	91.8 W
R70MM.DM.930.xx.22	3000K - Ra90	3125 mm	-	11484 lm	85.8 W	available september 2021	96.2 W
R70MM.DM.930.xx.23	3000K - Ra90	3267 mm	-	12006 lm	89.7 W	available september 2021	100.6 W
R70MM.DM.930.xx.24	3000K - Ra90	3405 mm	-	12528 lm	93.6 W	available september 2021	104.9 W
R70MM.DM.930.xx.25	3000K - Ra90	3548 mm	1701 + 1843 mm	13050 lm	97.5 W	available september 2021	109.3 W
R70MM.DM.930.xx.26	3000K - Ra90	3687 mm	1701 + 1982 mm	13572 lm	101.4 W	available september 2021	113.7 W
R70MM.DM.930.xx.27	3000K - Ra90	3829 mm	1843 + 1982 mm	14094 lm	105.3 W	available september 2021	118 W
R70MM.DM.930.xx.28	3000K - Ra90	3968 mm	1982 + 1982 mm	14616 lm	109.2 W	available september 2021	122.4 W
R70MM.DM.930.xx.29	3000K - Ra90	4110 mm	1982 + 2125 mm	15138 lm	113.1 W	available september 2021	126.8 W
R70MM.DM.930.xx.30	3000K - Ra90	4248 mm	1982 + 2262 mm	15660 lm	117 W	available september 2021	131.2 W
R70MM.DM.930.xx.31	3000K - Ra90	4390 mm	2125 + 2262 mm	16182 lm	120.9 W	available september 2021	135.5 W
R70MM.DM.930.xx.32	3000K - Ra90	4528 mm	2262 + 2262 mm	16704 lm	124.8 W	available september 2021	139.9 W
R70MM.DM.930.xx.33	3000K - Ra90	4670 mm	2262 + 2405 mm	17226 lm	128.7 W	available september 2021	144.3 W
R70MM.DM.930.xx.34	3000K - Ra90	4810 mm	2262 + 2544 mm	17748 lm	132.6 W	available september 2021	148.6 W
R70MM.DM.930.xx.35	3000K - Ra90	4952 mm	2405 + 2544 mm	18270 lm	136.5 W	available september 2021	153 W
R70MM.DM.930.xx.36	3000K - Ra90	5091 mm	2544 + 2544 mm	18792 lm	140.4 W	available september 2021	157.4 W
R70MM.DM.930.xx.37	3000K - Ra90	5233 mm	2544 + 2686 mm	19314 lm	144.3 W	available september 2021	161.8 W
R70MM.DM.930.xx.38	3000K - Ra90	5371 mm	2544 + 2824 mm	19836 lm	148.2 W	available september 2021	166.1 W
R70MM.DM.930.xx.39	3000K - Ra90	5513 mm	2544 + 2966 mm	20358 lm	152.1 W	available september 2021	170.5 W
R70MM.DM.930.xx.40	3000K - Ra90	5653 mm	2544 + 3105 mm	20880 lm	156 W	available september 2021	174.9 W
R70MM.DM.930.xx.41	3000K - Ra90	5795 mm	2544 + 3248 mm	21402 lm	159.9 W	available september 2021	179.2 W
R70MM.DM.930.xx.42	3000K - Ra90	5933 mm	2824 + 3105 mm	21924 lm	163.8 W	available september 2021	183.6 W
R70MM.DM.930.xx.43	3000K - Ra90	6075 mm	2966 + 3105 mm	22446 lm	167.7 W	available september 2021	188 W
R70MM.DM.930.xx.44	3000K - Ra90	6214 mm	3105 + 3105 mm	22968 lm	171.6 W	available september 2021	192.4 W
R70MM.DM.930.xx.45	3000K - Ra90	6356 mm	3105 + 3248 mm	23490 lm	175.5 W	available september 2021	196.7 W
R70MM.DM.930.xx.46	3000K - Ra90	6494 mm	3105 + 3385 mm	24012 lm	179.4 W	available september 2021	201.1 W
R70MM.DM.930.xx.47	3000K - Ra90	6636 mm	3248 + 3385 mm	24534 lm	183.3 W	available september 2021	205.5 W
R70MM.DM.930.xx.48	3000K - Ra90	6774 mm	3385 + 3385 mm	25056 lm	187.2 W	available september 2021	209.8 W

General specs

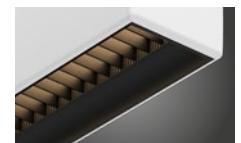
	LED Module	Luminaire
Efficacy 3000K - Ra80	168.4lm/W	n/a
Efficacy 4000K - Ra80	177.4lm/W	n/a
Efficacy 2700K - Ra90	131.8lm/W	n/a
Efficacy 3000K - Ra90	134lm/W	n/a
Efficacy 4000K - Ra90	141.1lm/W	n/a
Color consistency	SDCM 3	
Photobiological safety	Risk Group 1	
Power factor	0.9	

Lumen Maintenance

L70	B50	>70000 hrs
	B20	>70000 hrs
	B10	>70000 hrs
L80	B50	>70000 hrs
	B20	65000 hrs
	B10	60000 hrs
L90	B50	35000 hrs
	B20	35000 hrs
	B10	30000 hrs



Opal cover (standard)
R70.00.000.xx.00



UGR Grid
R7000.00.000.xx.00.G

Luminous flux for LEDliner70 with UGR grid(down only) is ca. lower than with standard opal cover.
Please add ".G" to the article number for the UGR Grid version.

* Depending on the finish a luminous flux decrease up to 18% is possible relative to the luminous flux when opting for standard matt white texture powdercoated profiles.

** The max. length of a single piece of profile is 3405mm. Ready to go-profiles with a length higher than 3405mm consist of 2 individual piece connected with a 180° mechanical connector
Total length is the length with end caps included, individual lengths are lengths with the end cap excluded.

LEDliner70 Down - Ready To Go - 4000K Ra90

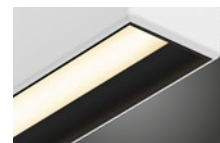
Article nr.	CCT - CRI	Length Total**	Lengths Individual**	Lum. Flux LED Module*	Power LED Module	Lum. Flux Luminaire*	Power Luminaire
R70MM.DM.940.xx.06	4000K - Ra90	879 mm	-	3300 lm	23.4 W	available september 2021	26.2 W
R70MM.DM.940.xx.07	4000K - Ra90	1021 mm	-	3850 lm	27.3 W	available september 2021	30.6 W
R70MM.DM.940.xx.08	4000K - Ra90	1159 mm	-	4400 lm	31.2 W	available september 2021	35 W
R70MM.DM.940.xx.09	4000K - Ra90	1301 mm	-	4950 lm	35.1 W	available september 2021	39.3 W
R70MM.DM.940.xx.10	4000K - Ra90	1441 mm	-	5500 lm	39 W	available september 2021	43.7 W
R70MM.DM.940.xx.11	4000K - Ra90	1583 mm	-	6050 lm	42.9 W	available september 2021	48.1 W
R70MM.DM.940.xx.12	4000K - Ra90	1721 mm	-	6600 lm	46.8 W	available september 2021	52.5 W
R70MM.DM.940.xx.13	4000K - Ra90	1863 mm	-	7150 lm	50.7 W	available september 2021	56.8 W
R70MM.DM.940.xx.14	4000K - Ra90	2002 mm	-	7700 lm	54.6 W	available september 2021	61.2 W
R70MM.DM.940.xx.15	4000K - Ra90	2144 mm	-	8250 lm	58.5 W	available september 2021	65.6 W
R70MM.DM.940.xx.16	4000K - Ra90	2282 mm	-	8800 lm	62.4 W	available september 2021	69.9 W
R70MM.DM.940.xx.17	4000K - Ra90	2424 mm	-	9350 lm	66.3 W	available september 2021	74.3 W
R70MM.DM.940.xx.18	4000K - Ra90	2564 mm	-	9900 lm	70.2 W	available september 2021	78.7 W
R70MM.DM.940.xx.19	4000K - Ra90	2706 mm	-	10450 lm	74.1 W	available september 2021	83.1 W
R70MM.DM.940.xx.20	4000K - Ra90	2844 mm	-	11000 lm	78 W	available september 2021	87.4 W
R70MM.DM.940.xx.21	4000K - Ra90	2986 mm	-	11550 lm	81.9 W	available september 2021	91.8 W
R70MM.DM.940.xx.22	4000K - Ra90	3125 mm	-	12100 lm	85.8 W	available september 2021	96.2 W
R70MM.DM.940.xx.23	4000K - Ra90	3267 mm	-	12650 lm	89.7 W	available september 2021	100.6 W
R70MM.DM.940.xx.24	4000K - Ra90	3405 mm	-	13200 lm	93.6 W	available september 2021	104.9 W
R70MM.DM.940.xx.25	4000K - Ra90	3548 mm	1701 + 1843 mm	13750 lm	97.5 W	available september 2021	109.3 W
R70MM.DM.940.xx.26	4000K - Ra90	3687 mm	1701 + 1982 mm	14300 lm	101.4 W	available september 2021	113.7 W
R70MM.DM.940.xx.27	4000K - Ra90	3829 mm	1843 + 1982 mm	14850 lm	105.3 W	available september 2021	118 W
R70MM.DM.940.xx.28	4000K - Ra90	3968 mm	1982 + 1982 mm	15400 lm	109.2 W	available september 2021	122.4 W
R70MM.DM.940.xx.29	4000K - Ra90	4110 mm	1982 + 2125 mm	15950 lm	113.1 W	available september 2021	126.8 W
R70MM.DM.940.xx.30	4000K - Ra90	4248 mm	1982 + 2262 mm	16500 lm	117 W	available september 2021	131.2 W
R70MM.DM.940.xx.31	4000K - Ra90	4390 mm	2125 + 2262 mm	17050 lm	120.9 W	available september 2021	135.5 W
R70MM.DM.940.xx.32	4000K - Ra90	4528 mm	2262 + 2262 mm	17600 lm	124.8 W	available september 2021	139.9 W
R70MM.DM.940.xx.33	4000K - Ra90	4670 mm	2262 + 2405 mm	18150 lm	128.7 W	available september 2021	144.3 W
R70MM.DM.940.xx.34	4000K - Ra90	4810 mm	2262 + 2544 mm	18700 lm	132.6 W	available september 2021	148.6 W
R70MM.DM.940.xx.35	4000K - Ra90	4952 mm	2405 + 2544 mm	19250 lm	136.5 W	available september 2021	153 W
R70MM.DM.940.xx.36	4000K - Ra90	5091 mm	2544 + 2544 mm	19800 lm	140.4 W	available september 2021	157.4 W
R70MM.DM.940.xx.37	4000K - Ra90	5233 mm	2544 + 2686 mm	20350 lm	144.3 W	available september 2021	161.8 W
R70MM.DM.940.xx.38	4000K - Ra90	5371 mm	2544 + 2824 mm	20900 lm	148.2 W	available september 2021	166.1 W
R70MM.DM.940.xx.39	4000K - Ra90	5513 mm	2544 + 2966 mm	21450 lm	152.1 W	available september 2021	170.5 W
R70MM.DM.940.xx.40	4000K - Ra90	5653 mm	2544 + 3105 mm	22000 lm	156 W	available september 2021	174.9 W
R70MM.DM.940.xx.41	4000K - Ra90	5795 mm	2544 + 3248 mm	22550 lm	159.9 W	available september 2021	179.2 W
R70MM.DM.940.xx.42	4000K - Ra90	5933 mm	2824 + 3105 mm	23100 lm	163.8 W	available september 2021	183.6 W
R70MM.DM.940.xx.43	4000K - Ra90	6075 mm	2966 + 3105 mm	23650 lm	167.7 W	available september 2021	188 W
R70MM.DM.940.xx.44	4000K - Ra90	6214 mm	3105 + 3105 mm	24200 lm	171.6 W	available september 2021	192.4 W
R70MM.DM.940.xx.45	4000K - Ra90	6356 mm	3105 + 3248 mm	24750 lm	175.5 W	available september 2021	196.7 W
R70MM.DM.940.xx.46	4000K - Ra90	6494 mm	3105 + 3385 mm	25300 lm	179.4 W	available september 2021	201.1 W
R70MM.DM.940.xx.47	4000K - Ra90	6636 mm	3248 + 3385 mm	25850 lm	183.3 W	available september 2021	205.5 W
R70MM.DM.940.xx.48	4000K - Ra90	6774 mm	3385 + 3385 mm	26400 lm	187.2 W	available september 2021	209.8 W

General specs

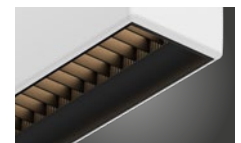
	LED Module	Luminaire
Efficacy 3000K - Ra80	168.4lm/W	n/a
Efficacy 4000K - Ra80	177.4lm/W	n/a
Efficacy 2700K - Ra90	131.8lm/W	n/a
Efficacy 3000K - Ra90	134lm/W	n/a
Efficacy 4000K - Ra90	141.1lm/W	n/a
Color consistency	SDCM 3	
Photobiological safety	Risk Group 1	
Power factor	0.9	

Lumen Maintenance

L70	B50	>70000 hrs
	B20	>70000 hrs
	B10	>70000 hrs
L80	B50	>70000 hrs
	B20	65000 hrs
	B10	60000 hrs
L90	B50	35000 hrs
	B20	35000 hrs
	B10	30000 hrs



Opal cover (standard)
R70.00.000.xx.00



UGR Grid
R7000.00.000.xx.00.G

Luminous flux for LEDliner70 with UGR grid(down only) is ca. lower than with standard opal cover.
Please add ".G" to the article number for the UGR Grid version.

* Depending on the finish a luminous flux decrease up to 18% is possible relative to the luminous flux when opting for standard matt white texture powdercoated profiles.

** The max. length of a single piece of profile is 3405mm. Ready to go-profiles with a length higher than 3405mm consist of 2 individual piece connected with a 180° mechanical connector
Total length is the length with end caps included, individual lengths are lengths with the end cap excluded.

Article number composition

MM = Mounting method
S1: Up&Down - Suspended 1 circuit
S2: Up&Down - Suspended 2 circuits

R70 = Ready To Go LEDliner70

R70MM.DM.CCC.xx-00

Available colors
xx = Color Code
Matt White Texture R7000.00.000.**01.00**
Matt Black Texture R7000.00.000.**03.00**
Matt Grey 9006 Text. R7000.00.000.**18.00**
Matt Anthracite Text. R7000.00.000.**07.00**
Other colors on request.

DM = Dim method
24: Non dimmable
25: 1-10V dimmable
26: Touch & DALI dim.

CCC = CRI + CCT
830: Ra80 - 3000K
840: Ra80 - 4000K
927: Ra90 - 2700K (Only available in limited lengths)
930: Ra90 - 3000K
940: Ra90 - 4000K

Size (Doxis reference)

LEDliner70 Up&Down - Ready To Go - 3000K Ra80

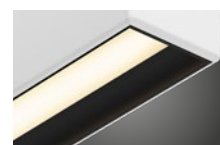
Article nr.	CCT - CRI	Length Total**	Lengths Individual**	Lum. Flux LED Module*	Power LED Module	Lum. Flux Luminaire*	Power Luminaire
R70MM.DM.830.xx.06	3000K - Ra80	879 mm	-	2x 3132 lm	2x 18.6 W	available september 2021	2x 20.9 W
R70MM.DM.830.xx.07	3000K - Ra80	1021 mm	-	2x 3654 lm	2x 21.7 W	available september 2021	2x 24.3 W
R70MM.DM.830.xx.08	3000K - Ra80	1159 mm	-	2x 4176 lm	2x 24.8 W	available september 2021	2x 27.8 W
R70MM.DM.830.xx.09	3000K - Ra80	1301 mm	-	2x 4698 lm	2x 27.9 W	available september 2021	2x 31.3 W
R70MM.DM.830.xx.10	3000K - Ra80	1441 mm	-	2x 5220 lm	2x 31 W	available september 2021	2x 34.8 W
R70MM.DM.830.xx.11	3000K - Ra80	1583 mm	-	2x 5742 lm	2x 34.1 W	available september 2021	2x 38.2 W
R70MM.DM.830.xx.12	3000K - Ra80	1721 mm	-	2x 6264 lm	2x 37.2 W	available september 2021	2x 41.7 W
R70MM.DM.830.xx.13	3000K - Ra80	1863 mm	-	2x 6786 lm	2x 40.3 W	available september 2021	2x 45.2 W
R70MM.DM.830.xx.14	3000K - Ra80	2002 mm	-	2x 7308 lm	2x 43.4 W	available september 2021	2x 48.7 W
R70MM.DM.830.xx.15	3000K - Ra80	2144 mm	-	2x 7830 lm	2x 46.5 W	available september 2021	2x 52.1 W
R70MM.DM.830.xx.16	3000K - Ra80	2282 mm	-	2x 8352 lm	2x 49.6 W	available september 2021	2x 55.6 W
R70MM.DM.830.xx.17	3000K - Ra80	2424 mm	-	2x 8874 lm	2x 52.7 W	available september 2021	2x 59.1 W
R70MM.DM.830.xx.18	3000K - Ra80	2564 mm	-	2x 9396 lm	2x 55.8 W	available september 2021	2x 62.6 W
R70MM.DM.830.xx.19	3000K - Ra80	2706 mm	-	2x 9918 lm	2x 58.9 W	available september 2021	2x 66 W
R70MM.DM.830.xx.20	3000K - Ra80	2844 mm	-	2x 10440 lm	2x 62 W	available september 2021	2x 69.5 W
R70MM.DM.830.xx.21	3000K - Ra80	2986 mm	-	2x 10962 lm	2x 65.1 W	available september 2021	2x 73 W
R70MM.DM.830.xx.22	3000K - Ra80	3125 mm	-	2x 11484 lm	2x 68.2 W	available september 2021	2x 76.5 W
R70MM.DM.830.xx.23	3000K - Ra80	3267 mm	-	2x 12006 lm	2x 71.3 W	available september 2021	2x 79.9 W
R70MM.DM.830.xx.24	3000K - Ra80	3405 mm	-	2x 12528 lm	2x 74.4 W	available september 2021	2x 83.4 W
R70MM.DM.830.xx.25	3000K - Ra80	3548 mm	1701 + 1843 mm	2x 13050 lm	2x 77.5 W	available september 2021	2x 86.9 W
R70MM.DM.830.xx.26	3000K - Ra80	3687 mm	1701 + 1982 mm	2x 13572 lm	2x 80.6 W	available september 2021	2x 90.4 W
R70MM.DM.830.xx.27	3000K - Ra80	3829 mm	1843 + 1982 mm	2x 14094 lm	2x 83.7 W	available september 2021	2x 93.8 W
R70MM.DM.830.xx.28	3000K - Ra80	3968 mm	1982 + 1982 mm	2x 14616 lm	2x 86.8 W	available september 2021	2x 97.3 W
R70MM.DM.830.xx.29	3000K - Ra80	4110 mm	1982 + 2125 mm	2x 15138 lm	2x 89.9 W	available september 2021	2x 100.8 W
R70MM.DM.830.xx.30	3000K - Ra80	4248 mm	1982 + 2262 mm	2x 15660 lm	2x 93 W	available september 2021	2x 104.3 W
R70MM.DM.830.xx.31	3000K - Ra80	4390 mm	2125 + 2262 mm	2x 16182 lm	2x 96.1 W	available september 2021	2x 107.7 W
R70MM.DM.830.xx.32	3000K - Ra80	4528 mm	2262 + 2262 mm	2x 16704 lm	2x 99.2 W	available september 2021	2x 111.2 W
R70MM.DM.830.xx.33	3000K - Ra80	4670 mm	2262 + 2405 mm	2x 17226 lm	2x 102.3 W	available september 2021	2x 114.7 W
R70MM.DM.830.xx.34	3000K - Ra80	4810 mm	2262 + 2544 mm	2x 17748 lm	2x 105.4 W	available september 2021	2x 118.2 W
R70MM.DM.830.xx.35	3000K - Ra80	4952 mm	2405 + 2544 mm	2x 18270 lm	2x 108.5 W	available september 2021	2x 121.6 W
R70MM.DM.830.xx.36	3000K - Ra80	5091 mm	2544 + 2544 mm	2x 18792 lm	2x 111.6 W	available september 2021	2x 125.1 W
R70MM.DM.830.xx.37	3000K - Ra80	5233 mm	2544 + 2686 mm	2x 19314 lm	2x 114.7 W	available september 2021	2x 128.6 W
R70MM.DM.830.xx.38	3000K - Ra80	5371 mm	2544 + 2824 mm	2x 19836 lm	2x 117.8 W	available september 2021	2x 132.1 W
R70MM.DM.830.xx.39	3000K - Ra80	5513 mm	2544 + 2966 mm	2x 20358 lm	2x 120.9 W	available september 2021	2x 135.5 W
R70MM.DM.830.xx.40	3000K - Ra80	5653 mm	2544 + 3105 mm	2x 20880 lm	2x 124 W	available september 2021	2x 139 W
R70MM.DM.830.xx.41	3000K - Ra80	5795 mm	2544 + 3248 mm	2x 21402 lm	2x 127.1 W	available september 2021	2x 142.5 W
R70MM.DM.830.xx.42	3000K - Ra80	5933 mm	2824 + 3105 mm	2x 21924 lm	2x 130.2 W	available september 2021	2x 146 W
R70MM.DM.830.xx.43	3000K - Ra80	6075 mm	2966 + 3105 mm	2x 22446 lm	2x 133.3 W	available september 2021	2x 149.4 W
R70MM.DM.830.xx.44	3000K - Ra80	6214 mm	3105 + 3105 mm	2x 22968 lm	2x 136.4 W	available september 2021	2x 152.9 W
R70MM.DM.830.xx.45	3000K - Ra80	6356 mm	3105 + 3248 mm	2x 23490 lm	2x 139.5 W	available september 2021	2x 156.4 W
R70MM.DM.830.xx.46	3000K - Ra80	6494 mm	3105 + 3385 mm	2x 24012 lm	2x 142.6 W	available september 2021	2x 159.9 W
R70MM.DM.830.xx.47	3000K - Ra80	6636 mm	3248 + 3385 mm	2x 24534 lm	2x 145.7 W	available september 2021	2x 163.3 W
R70MM.DM.830.xx.48	3000K - Ra80	6774 mm	3385 + 3385 mm	2x 25056 lm	2x 148.8 W	available september 2021	2x 166.8 W

General specs

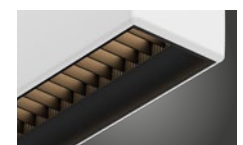
	LED Module	Luminaire
Efficacy 3000K - Ra80	168.4lm/W	n/a
Efficacy 4000K - Ra80	177.4lm/W	n/a
Efficacy 2700K - Ra90	131.8lm/W	n/a
Efficacy 3000K - Ra90	134lm/W	n/a
Efficacy 4000K - Ra90	141.1lm/W	n/a
Color consistency	SDCM 3	
Photobiological safety	Risk Group 1	
Power factor	0.9	

Lumen Maintenance

LED Module	Beam Angle	Lumen Maintenance
L70	B50	>70000 hrs
	B20	>70000 hrs
	B10	>70000 hrs
L80	B50	>70000 hrs
	B20	65000 hrs
	B10	60000 hrs
L90	B50	35000 hrs
	B20	35000 hrs
	B10	30000 hrs



Opal cover (standard)
R70.00.000.xx.00



UGR Grid
R7000.00.000.xx.00.G

Luminous flux for LEDliner70 with UGR grid(down only) is ca. lower than with standard opal cover.
Please add ".G" to the article number for the UGR Grid version.

* Depending on the finish a luminous flux decrease up to 18% is possible relative to the luminous flux when opting for standard matt white texture powdercoated profiles.

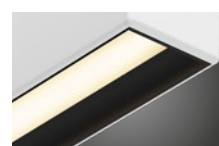
** The max. length of a single piece of profile is 3405mm. Ready to go-profiles with a length higher than 3405mm consist of 2 individual piece connected with a 180° mechanical connector
Total length is the length with end caps included, individual lengths are lengths with the end cap excluded.

LEDliner70 Up&Down - Ready To Go - 4000K Ra80

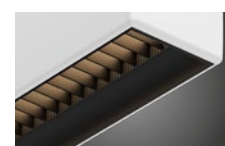
Article nr.	CCT - CRI	Length Total**	Lengths Individual**	Lum. Flux LED Module*	Power LED Module	Lum. Flux Luminaire*	Power Luminaire
R70MM.DM.840.xx.06	4000K - Ra80	879 mm	-	2x 3300 lm	2x 18.6 W	available september 2021	2x 20.9 W
R70MM.DM.840.xx.07	4000K - Ra80	1021 mm	-	2x 3850 lm	2x 21.7 W	available september 2021	2x 24.3 W
R70MM.DM.840.xx.08	4000K - Ra80	1159 mm	-	2x 4400 lm	2x 24.8 W	available september 2021	2x 27.8 W
R70MM.DM.840.xx.09	4000K - Ra80	1301 mm	-	2x 4950 lm	2x 27.9 W	available september 2021	2x 31.3 W
R70MM.DM.840.xx.10	4000K - Ra80	1441 mm	-	2x 5500 lm	2x 31 W	available september 2021	2x 34.8 W
R70MM.DM.840.xx.11	4000K - Ra80	1583 mm	-	2x 6050 lm	2x 34.1 W	available september 2021	2x 38.2 W
R70MM.DM.840.xx.12	4000K - Ra80	1721 mm	-	2x 6600 lm	2x 37.2 W	available september 2021	2x 41.7 W
R70MM.DM.840.xx.13	4000K - Ra80	1863 mm	-	2x 7150 lm	2x 40.3 W	available september 2021	2x 45.2 W
R70MM.DM.840.xx.14	4000K - Ra80	2002 mm	-	2x 7700 lm	2x 43.4 W	available september 2021	2x 48.7 W
R70MM.DM.840.xx.15	4000K - Ra80	2144 mm	-	2x 8250 lm	2x 46.5 W	available september 2021	2x 52.1 W
R70MM.DM.840.xx.16	4000K - Ra80	2282 mm	-	2x 8800 lm	2x 49.6 W	available september 2021	2x 55.6 W
R70MM.DM.840.xx.17	4000K - Ra80	2424 mm	-	2x 9350 lm	2x 52.7 W	available september 2021	2x 59.1 W
R70MM.DM.840.xx.18	4000K - Ra80	2564 mm	-	2x 9900 lm	2x 55.8 W	available september 2021	2x 62.6 W
R70MM.DM.840.xx.19	4000K - Ra80	2706 mm	-	2x 10450 lm	2x 58.9 W	available september 2021	2x 66 W
R70MM.DM.840.xx.20	4000K - Ra80	2844 mm	-	2x 11000 lm	2x 62 W	available september 2021	2x 69.5 W
R70MM.DM.840.xx.21	4000K - Ra80	2986 mm	-	2x 11550 lm	2x 65.1 W	available september 2021	2x 73 W
R70MM.DM.840.xx.22	4000K - Ra80	3125 mm	-	2x 12100 lm	2x 68.2 W	available september 2021	2x 76.5 W
R70MM.DM.840.xx.23	4000K - Ra80	3267 mm	-	2x 12650 lm	2x 71.3 W	available september 2021	2x 79.9 W
R70MM.DM.840.xx.24	4000K - Ra80	3405 mm	-	2x 13200 lm	2x 74.4 W	available september 2021	2x 83.4 W
R70MM.DM.840.xx.25	4000K - Ra80	3548 mm	1701 + 1843 mm	2x 13750 lm	2x 77.5 W	available september 2021	2x 86.9 W
R70MM.DM.840.xx.26	4000K - Ra80	3687 mm	1701 + 1982 mm	2x 14300 lm	2x 80.6 W	available september 2021	2x 90.4 W
R70MM.DM.840.xx.27	4000K - Ra80	3829 mm	1843 + 1982 mm	2x 14850 lm	2x 83.7 W	available september 2021	2x 93.8 W
R70MM.DM.840.xx.28	4000K - Ra80	3968 mm	1982 + 1982 mm	2x 15400 lm	2x 86.8 W	available september 2021	2x 97.3 W
R70MM.DM.840.xx.29	4000K - Ra80	4110 mm	1982 + 2125 mm	2x 15950 lm	2x 89.9 W	available september 2021	2x 100.8 W
R70MM.DM.840.xx.30	4000K - Ra80	4248 mm	1982 + 2262 mm	2x 16500 lm	2x 93 W	available september 2021	2x 104.3 W
R70MM.DM.840.xx.31	4000K - Ra80	4390 mm	2125 + 2262 mm	2x 17050 lm	2x 96.1 W	available september 2021	2x 107.7 W
R70MM.DM.840.xx.32	4000K - Ra80	4528 mm	2262 + 2262 mm	2x 17600 lm	2x 99.2 W	available september 2021	2x 111.2 W
R70MM.DM.840.xx.33	4000K - Ra80	4670 mm	2262 + 2405 mm	2x 18150 lm	2x 102.3 W	available september 2021	2x 114.7 W
R70MM.DM.840.xx.34	4000K - Ra80	4810 mm	2262 + 2544 mm	2x 18700 lm	2x 105.4 W	available september 2021	2x 118.2 W
R70MM.DM.840.xx.35	4000K - Ra80	4952 mm	2405 + 2544 mm	2x 19250 lm	2x 108.5 W	available september 2021	2x 121.6 W
R70MM.DM.840.xx.36	4000K - Ra80	5091 mm	2544 + 2544 mm	2x 19800 lm	2x 111.6 W	available september 2021	2x 125.1 W
R70MM.DM.840.xx.37	4000K - Ra80	5233 mm	2544 + 2686 mm	2x 20350 lm	2x 114.7 W	available september 2021	2x 128.6 W
R70MM.DM.840.xx.38	4000K - Ra80	5371 mm	2544 + 2824 mm	2x 20900 lm	2x 117.8 W	available september 2021	2x 132.1 W
R70MM.DM.840.xx.39	4000K - Ra80	5513 mm	2544 + 2966 mm	2x 21450 lm	2x 120.9 W	available september 2021	2x 135.5 W
R70MM.DM.840.xx.40	4000K - Ra80	5653 mm	2544 + 3105 mm	2x 22000 lm	2x 124 W	available september 2021	2x 139 W
R70MM.DM.840.xx.41	4000K - Ra80	5795 mm	2544 + 3248 mm	2x 22550 lm	2x 127.1 W	available september 2021	2x 142.5 W
R70MM.DM.840.xx.42	4000K - Ra80	5933 mm	2824 + 3105 mm	2x 23100 lm	2x 130.2 W	available september 2021	2x 146 W
R70MM.DM.840.xx.43	4000K - Ra80	6075 mm	2966 + 3105 mm	2x 23650 lm	2x 133.3 W	available september 2021	2x 149.4 W
R70MM.DM.840.xx.44	4000K - Ra80	6214 mm	3105 + 3105 mm	2x 24200 lm	2x 136.4 W	available september 2021	2x 152.9 W
R70MM.DM.840.xx.45	4000K - Ra80	6356 mm	3105 + 3248 mm	2x 24750 lm	2x 139.5 W	available september 2021	2x 156.4 W
R70MM.DM.840.xx.46	4000K - Ra80	6494 mm	3105 + 3385 mm	2x 25300 lm	2x 142.6 W	available september 2021	2x 159.9 W
R70MM.DM.840.xx.47	4000K - Ra80	6636 mm	3248 + 3385 mm	2x 25850 lm	2x 145.7 W	available september 2021	2x 163.3 W
R70MM.DM.840.xx.48	4000K - Ra80	6774 mm	3385 + 3385 mm	2x 26400 lm	2x 148.8 W	available september 2021	2x 166.8 W

General specs		
	LED Module	Luminaire
Efficacy 3000K - Ra80	168.4lm/W	n/a
Efficacy 4000K - Ra80	177.4lm/W	n/a
Efficacy 2700K - Ra90	131.8lm/W	n/a
Efficacy 3000K - Ra90	134lm/W	n/a
Efficacy 4000K - Ra90	141.1lm/W	n/a
Color consistency	SDCM 3	
Photobiological safety	Risk Group 1	
Power factor	0.9	

Lumen Maintenance		
L70	B50	>70000 hrs
	B20	>70000 hrs
	B10	>70000 hrs
L80	B50	>70000 hrs
	B20	65000 hrs
	B10	60000 hrs
L90	B50	35000 hrs
	B20	35000 hrs
	B10	30000 hrs



Opal cover (standard)
R70.00.000.xx.00



UGR Grid
R7000.00.000.xx.00.G

Luminous flux for LEDliner70 with UGR grid(down only) is ca. lower than with standard opal cover.
Please add ".G" to the article number for the UGR Grid version.

* Depending on the finish a luminous flux decrease up to 18% is possible relative to the luminous flux when opting for standard matt white texture powdercoated profiles.

** The max. length of a single piece of profile is 3405mm. Ready to go-profiles with a length higher than 3405mm consist of 2 individual piece connected with a 180° mechanical connector
Total length is the length with end caps included, individual lengths are lengths with the end cap excluded.

LEDliner70 Up&Down - Ready To Go - 2700K Ra90

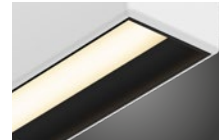
Article nr.	CCT - CRI	Length Total**	Lengths Individual**	Lum. Flux LED Module*	Power LED Module	Lum. Flux Luminaire*	Power Luminaire
R70MM.DM.927.xx.06	2700K - Ra90	879 mm	-	2x 3084 lm	2x 23.4 W	available september 2021	2x 26.2 W
R70MM.DM.927.xx.08	2700K - Ra90	1159 mm	-	2x 4112 lm	2x 31.2 W	available september 2021	2x 35 W
R70MM.DM.927.xx.10	2700K - Ra90	1441 mm	-	2x 5140 lm	2x 39 W	available september 2021	2x 43.7 W
R70MM.DM.927.xx.12	2700K - Ra90	1721 mm	-	2x 6168 lm	2x 46.8 W	available september 2021	2x 52.5 W
R70MM.DM.927.xx.14	2700K - Ra90	2002 mm	-	2x 7196 lm	2x 54.6 W	available september 2021	2x 61.2 W
R70MM.DM.927.xx.16	2700K - Ra90	2282 mm	-	2x 8224 lm	2x 62.4 W	available september 2021	2x 69.9 W
R70MM.DM.927.xx.18	2700K - Ra90	2564 mm	-	2x 9252 lm	2x 70.2 W	available september 2021	2x 78.7 W
R70MM.DM.927.xx.20	2700K - Ra90	2844 mm	-	2x 10280 lm	2x 78 W	available september 2021	2x 87.4 W
R70MM.DM.927.xx.22	2700K - Ra90	3125 mm	-	2x 11308 lm	2x 85.8 W	available september 2021	2x 96.2 W
R70MM.DM.927.xx.24	2700K - Ra90	3405 mm	-	2x 12336 lm	2x 93.6 W	available september 2021	2x 104.9 W
R70MM.DM.927.xx.26	2700K - Ra90	3687 mm	1701 + 1982 mm	2x 13364 lm	2x 101.4 W	available september 2021	2x 113.7 W
R70MM.DM.927.xx.28	2700K - Ra90	3968 mm	1982 + 1982 mm	2x 14392 lm	2x 109.2 W	available september 2021	2x 122.4 W
R70MM.DM.927.xx.30	2700K - Ra90	4248 mm	1982 + 2262 mm	2x 15420 lm	2x 117 W	available september 2021	2x 131.2 W
R70MM.DM.927.xx.32	2700K - Ra90	4528 mm	2262 + 2262 mm	2x 16448 lm	2x 124.8 W	available september 2021	2x 139.9 W
R70MM.DM.927.xx.34	2700K - Ra90	4810 mm	2262 + 2544 mm	2x 17476 lm	2x 132.6 W	available september 2021	2x 148.6 W
R70MM.DM.927.xx.36	2700K - Ra90	5091 mm	2544 + 2544 mm	2x 18504 lm	2x 140.4 W	available september 2021	2x 157.4 W
R70MM.DM.927.xx.38	2700K - Ra90	5371 mm	2544 + 2824 mm	2x 19532 lm	2x 148.2 W	available september 2021	2x 166.1 W
R70MM.DM.927.xx.40	2700K - Ra90	5653 mm	2544 + 3105 mm	2x 20560 lm	2x 156 W	available september 2021	2x 174.9 W
R70MM.DM.927.xx.42	2700K - Ra90	5933 mm	2824 + 3105 mm	2x 21588 lm	2x 163.8 W	available september 2021	2x 183.6 W
R70MM.DM.927.xx.44	2700K - Ra90	6214 mm	3105 + 3105 mm	2x 22616 lm	2x 171.6 W	available september 2021	2x 192.4 W
R70MM.DM.927.xx.46	2700K - Ra90	6494 mm	3105 + 3385 mm	2x 23644 lm	2x 179.4 W	available september 2021	2x 201.1 W
R70MM.DM.927.xx.48	2700K - Ra90	6774 mm	3385 + 3385 mm	2x 24672 lm	2x 187.2 W	available september 2021	2x 209.8 W

General specs

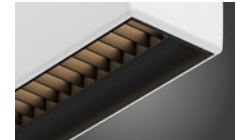
	LED Module	Luminaire
Efficacy 3000K - Ra80	168.4lm/W	n/a
Efficacy 4000K - Ra80	177.4lm/W	n/a
Efficacy 2700K - Ra90	131.8lm/W	n/a
Efficacy 3000K - Ra90	134lm/W	n/a
Efficacy 4000K - Ra90	141.1lm/W	n/a
Color consistency	SDCM 3	
Photobiological safety	Risk Group 1	
Power factor	0.9	

Lumen Maintenance

L70	B50	>70000 hrs
	B20	>70000 hrs
	B10	>70000 hrs
L80	B50	>70000 hrs
	B20	65000 hrs
	B10	60000 hrs
L90	B50	35000 hrs
	B20	35000 hrs
	B10	30000 hrs



Opal cover (standard)
R70.00.000.xx.00



UGR Grid
R7000.00.000.xx.00.G

Luminous flux for LEDliner70 with UGR grid(down only) is ca. lower than with standard opal cover.
Please add ".G" to the article number for the UGR Grid version.

* Depending on the finish a luminous flux decrease up to 18% is possible relative to the luminous flux when opting for standard matt white texture powdercoated profiles.

** The max. length of a single piece of profile is 3405mm. Ready to go-profiles with a length higher than 3405mm consist of 2 individual piece connected with a 180° mechanical connector
Total length is the length with end caps included, individual lengths are lengths with the end cap excluded.

LEDliner70 Up&Down - Ready To Go - 3000K Ra90

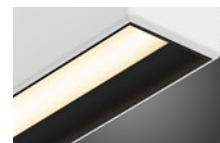
Article nr.	CCT - CRI	Length Total**	Lengths Individual**	Lum. Flux LED Module*	Power LED Module	Lum. Flux Luminaire*	Power Luminaire
R70MM.DM.930.xx.06	3000K - Ra90	879 mm	-	2x 3132 lm	2x 23.4 W	available september 2021	2x 26.2 W
R70MM.DM.930.xx.07	3000K - Ra90	1021 mm	-	2x 3654 lm	2x 27.3 W	available september 2021	2x 30.6 W
R70MM.DM.930.xx.08	3000K - Ra90	1159 mm	-	2x 4176 lm	2x 31.2 W	available september 2021	2x 35 W
R70MM.DM.930.xx.09	3000K - Ra90	1301 mm	-	2x 4698 lm	2x 35.1 W	available september 2021	2x 39.3 W
R70MM.DM.930.xx.10	3000K - Ra90	1441 mm	-	2x 5220 lm	2x 39 W	available september 2021	2x 43.7
R70MM.DM.930.xx.11	3000K - Ra90	1583 mm	-	2x 5742 lm	2x 42.9 W	available september 2021	2x 48.1 W
R70MM.DM.930.xx.12	3000K - Ra90	1721 mm	-	2x 6264 lm	2x 46.8 W	available september 2021	2x 52.5 W
R70MM.DM.930.xx.13	3000K - Ra90	1863 mm	-	2x 6786 lm	2x 50.7 W	available september 2021	2x 56.8 W
R70MM.DM.930.xx.14	3000K - Ra90	2002 mm	-	2x 7308 lm	2x 54.6 W	available september 2021	2x 61.2 W
R70MM.DM.930.xx.15	3000K - Ra90	2144 mm	-	2x 7830 lm	2x 58.5 W	available september 2021	2x 65.6 W
R70MM.DM.930.xx.16	3000K - Ra90	2282 mm	-	2x 8352 lm	2x 62.4 W	available september 2021	2x 69.9 W
R70MM.DM.930.xx.17	3000K - Ra90	2424 mm	-	2x 8874 lm	2x 66.3 W	available september 2021	2x 74.3 W
R70MM.DM.930.xx.18	3000K - Ra90	2564 mm	-	2x 9396 lm	2x 70.2 W	available september 2021	2x 78.7 W
R70MM.DM.930.xx.19	3000K - Ra90	2706 mm	-	2x 9918 lm	2x 74.1 W	available september 2021	2x 83.1 W
R70MM.DM.930.xx.20	3000K - Ra90	2844 mm	-	2x 10440 lm	2x 78 W	available september 2021	2x 87.4 W
R70MM.DM.930.xx.21	3000K - Ra90	2986 mm	-	2x 10962 lm	2x 81.9 W	available september 2021	2x 91.8 W
R70MM.DM.930.xx.22	3000K - Ra90	3125 mm	-	2x 11484 lm	2x 85.8 W	available september 2021	2x 96.2 W
R70MM.DM.930.xx.23	3000K - Ra90	3267 mm	-	2x 12006 lm	2x 89.7 W	available september 2021	2x 100.6 W
R70MM.DM.930.xx.24	3000K - Ra90	3405 mm	-	2x 12528 lm	2x 93.6 W	available september 2021	2x 104.9 W
R70MM.DM.930.xx.25	3000K - Ra90	3548 mm	1701 + 1843 mm	2x 13050 lm	2x 97.5 W	available september 2021	2x 109.3 W
R70MM.DM.930.xx.26	3000K - Ra90	3687 mm	1701 + 1982 mm	2x 13572 lm	2x 101.4 W	available september 2021	2x 113.7 W
R70MM.DM.930.xx.27	3000K - Ra90	3829 mm	1843 + 1982 mm	2x 14094 lm	2x 105.3 W	available september 2021	2x 118 W
R70MM.DM.930.xx.28	3000K - Ra90	3968 mm	1982 + 1982 mm	2x 14616 lm	2x 109.2 W	available september 2021	2x 122.4 W
R70MM.DM.930.xx.29	3000K - Ra90	4110 mm	1982 + 2125 mm	2x 15138 lm	2x 113.1 W	available september 2021	2x 126.8 W
R70MM.DM.930.xx.30	3000K - Ra90	4248 mm	1982 + 2262 mm	2x 15660 lm	2x 117 W	available september 2021	2x 131.2 W
R70MM.DM.930.xx.31	3000K - Ra90	4390 mm	2125 + 2262 mm	2x 16182 lm	2x 120.9 W	available september 2021	2x 135.5 W
R70MM.DM.930.xx.32	3000K - Ra90	4528 mm	2262 + 2262 mm	2x 16704 lm	2x 124.8 W	available september 2021	2x 139.9 W
R70MM.DM.930.xx.33	3000K - Ra90	4670 mm	2262 + 2405 mm	2x 17226 lm	2x 128.7 W	available september 2021	2x 144.3 W
R70MM.DM.930.xx.34	3000K - Ra90	4810 mm	2262 + 2544 mm	2x 17748 lm	2x 132.6 W	available september 2021	2x 148.6 W
R70MM.DM.930.xx.35	3000K - Ra90	4952 mm	2405 + 2544 mm	2x 18270 lm	2x 136.5 W	available september 2021	2x 153 W
R70MM.DM.930.xx.36	3000K - Ra90	5091 mm	2544 + 2544 mm	2x 18792 lm	2x 140.4 W	available september 2021	2x 157.4 W
R70MM.DM.930.xx.37	3000K - Ra90	5233 mm	2544 + 2686 mm	2x 19314 lm	2x 144.3 W	available september 2021	2x 161.8 W
R70MM.DM.930.xx.38	3000K - Ra90	5371 mm	2544 + 2824 mm	2x 19836 lm	2x 148.2 W	available september 2021	2x 166.1 W
R70MM.DM.930.xx.39	3000K - Ra90	5513 mm	2544 + 2966 mm	2x 20358 lm	2x 152.1 W	available september 2021	2x 170.5 W
R70MM.DM.930.xx.40	3000K - Ra90	5653 mm	2544 + 3105 mm	2x 20880 lm	2x 156 W	available september 2021	2x 174.9 W
R70MM.DM.930.xx.41	3000K - Ra90	5795 mm	2544 + 3248 mm	2x 21402 lm	2x 159.9 W	available september 2021	2x 179.2 W
R70MM.DM.930.xx.42	3000K - Ra90	5933 mm	2824 + 3105 mm	2x 21924 lm	2x 163.8 W	available september 2021	2x 183.6 W
R70MM.DM.930.xx.43	3000K - Ra90	6075 mm	2966 + 3105 mm	2x 22446 lm	2x 167.7 W	available september 2021	2x 188 W
R70MM.DM.930.xx.44	3000K - Ra90	6214 mm	3105 + 3105 mm	2x 22968 lm	2x 171.6 W	available september 2021	2x 192.4 W
R70MM.DM.930.xx.45	3000K - Ra90	6356 mm	3105 + 3248 mm	2x 23490 lm	2x 175.5 W	available september 2021	2x 196.7 W
R70MM.DM.930.xx.46	3000K - Ra90	6494 mm	3105 + 3385 mm	2x 24012 lm	2x 179.4 W	available september 2021	2x 201.1 W
R70MM.DM.930.xx.47	3000K - Ra90	6636 mm	3248 + 3385 mm	2x 24534 lm	2x 183.3 W	available september 2021	2x 205.5 W
R70MM.DM.930.xx.48	3000K - Ra90	6774 mm	3385 + 3385 mm	2x 25056 lm	2x 187.2 W	available september 2021	2x 209.8 W

General specs

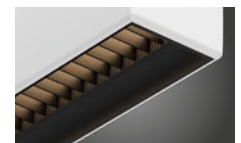
	LED Module	Luminaire
Efficacy 3000K - Ra80	168.4lm/W	n/a
Efficacy 4000K - Ra80	177.4lm/W	n/a
Efficacy 2700K - Ra90	131.8lm/W	n/a
Efficacy 3000K - Ra90	134lm/W	n/a
Efficacy 4000K - Ra90	141.1lm/W	n/a
Color consistency	SDCM 3	
Photobiological safety	Risk Group 1	
Power factor	0.9	

Lumen Maintenance

L70	B50	>70000 hrs
	B20	>70000 hrs
	B10	>70000 hrs
L80	B50	>70000 hrs
	B20	65000 hrs
	B10	60000 hrs
L90	B50	35000 hrs
	B20	35000 hrs
	B10	30000 hrs



Opal cover (standard)
R70.00.000.xx.00



UGR Grid
R7000.00.000.xx.00.G

Luminous flux for LEDliner70 with UGR grid(down only) is ca. lower than with standard opal cover.
Please add ".G" to the article number for the UGR Grid version.

* Depending on the finish a luminous flux decrease up to 18% is possible relative to the luminous flux when opting for standard matt white texture powdercoated profiles.

** The max. length of a single piece of profile is 3405mm. Ready to go-profiles with a length higher than 3405mm consist of 2 individual piece connected with a 180° mechanical connector
Total length is the length with end caps included, individual lengths are lengths with the end cap excluded.

LEDliner70 Up&Down - Ready To Go - 4000K Ra90

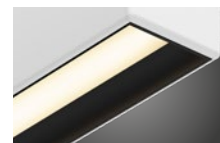
Article nr.	CCT - CRI	Length Total**	Lengths Individual**	Lum. Flux LED Module*	Power LED Module	Lum. Flux Luminaire*	Power Luminaire
R70MM.DM.940.xx.06	4000K - Ra90	879 mm	-	2x 3300 lm	2x 23.4 W	available september 2021	2x 26.2 W
R70MM.DM.940.xx.07	4000K - Ra90	1021 mm	-	2x 3850 lm	2x 27.3 W	available september 2021	2x 30.6 W
R70MM.DM.940.xx.08	4000K - Ra90	1159 mm	-	2x 4400 lm	2x 31.2 W	available september 2021	2x 35 W
R70MM.DM.940.xx.09	4000K - Ra90	1301 mm	-	2x 4950 lm	2x 35.1 W	available september 2021	2x 39.3 W
R70MM.DM.940.xx.10	4000K - Ra90	1441 mm	-	2x 5500 lm	2x 39 W	available september 2021	2x 43.7 W
R70MM.DM.940.xx.11	4000K - Ra90	1583 mm	-	2x 6050 lm	2x 42.9 W	available september 2021	2x 48.1 W
R70MM.DM.940.xx.12	4000K - Ra90	1721 mm	-	2x 6600 lm	2x 46.8 W	available september 2021	2x 52.5 W
R70MM.DM.940.xx.13	4000K - Ra90	1863 mm	-	2x 7150 lm	2x 50.7 W	available september 2021	2x 56.8 W
R70MM.DM.940.xx.14	4000K - Ra90	2002 mm	-	2x 7700 lm	2x 54.6 W	available september 2021	2x 61.2 W
R70MM.DM.940.xx.15	4000K - Ra90	2144 mm	-	2x 8250 lm	2x 58.5 W	available september 2021	2x 65.6 W
R70MM.DM.940.xx.16	4000K - Ra90	2282 mm	-	2x 8800 lm	2x 62.4 W	available september 2021	2x 69.9 W
R70MM.DM.940.xx.17	4000K - Ra90	2424 mm	-	2x 9350 lm	2x 66.3 W	available september 2021	2x 74.3 W
R70MM.DM.940.xx.18	4000K - Ra90	2564 mm	-	2x 9900 lm	2x 70.2 W	available september 2021	2x 78.7 W
R70MM.DM.940.xx.19	4000K - Ra90	2706 mm	-	2x 10450 lm	2x 74.1 W	available september 2021	2x 83.1 W
R70MM.DM.940.xx.20	4000K - Ra90	2844 mm	-	2x 11000 lm	2x 78 W	available september 2021	2x 87.4 W
R70MM.DM.940.xx.21	4000K - Ra90	2986 mm	-	2x 11550 lm	2x 81.9 W	available september 2021	2x 91.8 W
R70MM.DM.940.xx.22	4000K - Ra90	3125 mm	-	2x 12100 lm	2x 85.8 W	available september 2021	2x 96.2 W
R70MM.DM.940.xx.23	4000K - Ra90	3267 mm	-	2x 12650 lm	2x 89.7 W	available september 2021	2x 100.6 W
R70MM.DM.940.xx.24	4000K - Ra90	3405 mm	-	2x 13200 lm	2x 93.6 W	available september 2021	2x 104.9 W
R70MM.DM.940.xx.25	4000K - Ra90	3548 mm	1701 + 1843 mm	2x 13750 lm	2x 97.5 W	available september 2021	2x 109.3 W
R70MM.DM.940.xx.26	4000K - Ra90	3687 mm	1701 + 1982 mm	2x 14300 lm	2x 101.4 W	available september 2021	2x 113.7 W
R70MM.DM.940.xx.27	4000K - Ra90	3829 mm	1843 + 1982 mm	2x 14850 lm	2x 105.3 W	available september 2021	2x 118 W
R70MM.DM.940.xx.28	4000K - Ra90	3968 mm	1982 + 1982 mm	2x 15400 lm	2x 109.2 W	available september 2021	2x 122.4 W
R70MM.DM.940.xx.29	4000K - Ra90	4110 mm	1982 + 2125 mm	2x 15950 lm	2x 113.1 W	available september 2021	2x 126.8 W
R70MM.DM.940.xx.30	4000K - Ra90	4248 mm	1982 + 2262 mm	2x 16500 lm	2x 117 W	available september 2021	2x 131.2 W
R70MM.DM.940.xx.31	4000K - Ra90	4390 mm	2125 + 2262 mm	2x 17050 lm	2x 120.9 W	available september 2021	2x 135.5 W
R70MM.DM.940.xx.32	4000K - Ra90	4528 mm	2262 + 2262 mm	2x 17600 lm	2x 124.8 W	available september 2021	2x 139.9 W
R70MM.DM.940.xx.33	4000K - Ra90	4670 mm	2262 + 2405 mm	2x 18150 lm	2x 128.7 W	available september 2021	2x 144.3 W
R70MM.DM.940.xx.34	4000K - Ra90	4810 mm	2262 + 2544 mm	2x 18700 lm	2x 132.6 W	available september 2021	2x 148.6 W
R70MM.DM.940.xx.35	4000K - Ra90	4952 mm	2405 + 2544 mm	2x 19250 lm	2x 136.5 W	available september 2021	2x 153 W
R70MM.DM.940.xx.36	4000K - Ra90	5091 mm	2544 + 2544 mm	2x 19800 lm	2x 140.4 W	available september 2021	2x 157.4 W
R70MM.DM.940.xx.37	4000K - Ra90	5233 mm	2544 + 2686 mm	2x 20350 lm	2x 144.3 W	available september 2021	2x 161.8 W
R70MM.DM.940.xx.38	4000K - Ra90	5371 mm	2544 + 2824 mm	2x 20900 lm	2x 148.2 W	available september 2021	2x 166.1 W
R70MM.DM.940.xx.39	4000K - Ra90	5513 mm	2544 + 2966 mm	2x 21450 lm	2x 152.1 W	available september 2021	2x 170.5 W
R70MM.DM.940.xx.40	4000K - Ra90	5653 mm	2544 + 3105 mm	2x 22000 lm	2x 156 W	available september 2021	2x 174.9 W
R70MM.DM.940.xx.41	4000K - Ra90	5795 mm	2544 + 3248 mm	2x 22550 lm	2x 159.9 W	available september 2021	2x 179.2 W
R70MM.DM.940.xx.42	4000K - Ra90	5933 mm	2824 + 3105 mm	2x 23100 lm	2x 163.8 W	available september 2021	2x 183.6 W
R70MM.DM.940.xx.43	4000K - Ra90	6075 mm	2966 + 3105 mm	2x 23650 lm	2x 167.7 W	available september 2021	2x 188 W
R70MM.DM.940.xx.44	4000K - Ra90	6214 mm	3105 + 3105 mm	2x 24200 lm	2x 171.6 W	available september 2021	2x 192.4 W
R70MM.DM.940.xx.45	4000K - Ra90	6356 mm	3105 + 3248 mm	2x 24750 lm	2x 175.5 W	available september 2021	2x 196.7 W
R70MM.DM.940.xx.46	4000K - Ra90	6494 mm	3105 + 3385 mm	2x 25300 lm	2x 179.4 W	available september 2021	2x 201.1 W
R70MM.DM.940.xx.47	4000K - Ra90	6636 mm	3248 + 3385 mm	2x 25850 lm	2x 183.3 W	available september 2021	2x 205.5 W
R70MM.DM.940.xx.48	4000K - Ra90	6774 mm	3385 + 3385 mm	2x 26400 lm	2x 187.2 W	available september 2021	2x 209.8 W

General specs

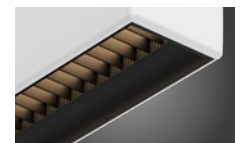
	LED Module	Luminaire
Efficacy 3000K - Ra80	168.4lm/W	n/a
Efficacy 4000K - Ra80	177.4lm/W	n/a
Efficacy 2700K - Ra90	131.8lm/W	n/a
Efficacy 3000K - Ra90	134lm/W	n/a
Efficacy 4000K - Ra90	141.1lm/W	n/a
Color consistency	SDCM 3	
Photobiological safety	Risk Group 1	
Power factor	0.9	

Lumen Maintenance

L70	B50	>70000 hrs
	B20	>70000 hrs
	B10	>70000 hrs
L80	B50	>70000 hrs
	B20	65000 hrs
	B10	60000 hrs
L90	B50	35000 hrs
	B20	35000 hrs
	B10	30000 hrs



Opal cover (standard)
R70.00.000.xx.00



UGR Grid
R7000.00.000.xx.00.G

Luminous flux for LEDliner70 with UGR grid(down only) is ca. lower than with standard opal cover.
Please add ".G" to the article number for the UGR Grid version.

* Depending on the finish a luminous flux decrease up to 18% is possible relative to the luminous flux when opting for standard matt white texture powdercoated profiles.

** The max. length of a single piece of profile is 3405mm. Ready to go-profiles with a length higher than 3405mm consist of 2 individual piece connected with a 180° mechanical connector
Total length is the length with end caps included, individual lengths are lengths with the end cap excluded.

LEDliner70 Ready To Go Down - Tunable White

Article nr.	CCT - CRI	CRI	Length Total**	Lengths Individual**	Lum. Flux LED Module at 6500K*	Power LED Module
R70MM.DM.TW.xx.06	2700-6500K	80	879 mm	-	3300 lm	20,4 W
R70MM.DM.TW.xx.08	2700-6500K	80	1159 mm	-	4400 lm	27,2 W
R70MM.DM.TW.xx.10	2700-6500K	80	1441 mm	-	5500 lm	34 W
R70MM.DM.TW.xx.12	2700-6500K	80	1721 mm	-	6600 lm	40,8 W
R70MM.DM.TW.xx.14	2700-6500K	80	2002 mm	-	7700 lm	47,6 W
R70MM.DM.TW.xx.16	2700-6500K	80	2282 mm	-	8800 lm	54,4 W
R70MM.DM.TW.xx.18	2700-6500K	80	2564 mm	-	9900 lm	61,2 W
R70MM.DM.TW.xx.20	2700-6500K	80	2844 mm	-	11000 lm	68 W
R70MM.DM.TW.xx.22	2700-6500K	80	3125 mm	-	12100 lm	74,8 W
R70MM.DM.TW.xx.24	2700-6500K	80	3405 mm	-	13200 lm	81,6 W
R70MM.DM.TW.xx.26	2700-6500K	80	3687 mm	1701 + 1982 mm	14300 lm	88,4 W
R70MM.DM.TW.xx.28	2700-6500K	80	3968 mm	1982 + 1982 mm	15400 lm	95,2 W
R70MM.DM.TW.xx.30	2700-6500K	80	4248 mm	1982 + 2262 mm	16500 lm	102 W
R70MM.DM.TW.xx.32	2700-6500K	80	4528 mm	2262 + 2262 mm	17600 lm	108,8 W
R70MM.DM.TW.xx.34	2700-6500K	80	4810 mm	2262 + 2544 mm	18700 lm	115,6 W
R70MM.DM.TW.xx.36	2700-6500K	80	5091 mm	2544 + 2544 mm	19800 lm	122,4 W
R70MM.DM.TW.xx.38	2700-6500K	80	5371 mm	2544 + 2824 mm	20900 lm	129,2 W
R70MM.DM.TW.xx.40	2700-6500K	80	5653 mm	2544 + 3105 mm	22000 lm	136 W
R70MM.DM.TW.xx.42	2700-6500K	80	5933 mm	2824 + 3105 mm	23100 lm	142,8 W
R70MM.DM.TW.xx.44	2700-6500K	80	6214 mm	3105 + 3105 mm	24200 lm	149,6 W
R70MM.DM.TW.xx.46	2700-6500K	80	6494 mm	3105 + 3385 mm	25300 lm	156,4 W
R70MM.DM.TW.xx.48	2700-6500K	80	6774 mm	3385 + 3385 mm	26400 lm	163,2 W

LEDliner70 Up&Down / Ready-To-Go

LEDliner70 Ready To Go Up&Down - Tunable White

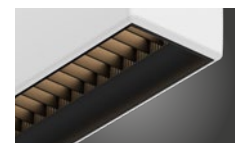
Article nr.	CCT - CRI	CRI	Length Total**	Lengths Individual**	Lum. Flux LED Module at 6500K*	Power LED Module
R70MM.DM.TW.xx.06	2700-6500K	80	879 mm	-	2x 3300 lm	2x 20,4 W
R70MM.DM.TW.xx.08	2700-6500K	80	1159 mm	-	2x 4400 lm	2x 27,2 W
R70MM.DM.TW.xx.10	2700-6500K	80	1441 mm	-	2x 5500 lm	2x 34 W
R70MM.DM.TW.xx.12	2700-6500K	80	1721 mm	-	2x 6600 lm	2x 40,8 W
R70MM.DM.TW.xx.14	2700-6500K	80	2002 mm	-	2x 7700 lm	2x 47,6 W
R70MM.DM.TW.xx.16	2700-6500K	80	2282 mm	-	2x 8800 lm	2x 54,4 W
R70MM.DM.TW.xx.18	2700-6500K	80	2564 mm	-	2x 9900 lm	2x 61,2 W
R70MM.DM.TW.xx.20	2700-6500K	80	2844 mm	-	2x 11000 lm	2x 68 W
R70MM.DM.TW.xx.22	2700-6500K	80	3125 mm	-	2x 12100 lm	2x 74,8 W
R70MM.DM.TW.xx.24	2700-6500K	80	3405 mm	-	2x 13200 lm	2x 81,6 W
R70MM.DM.TW.xx.26	2700-6500K	80	3687 mm	1701 + 1982 mm	2x 14300 lm	2x 88,4 W
R70MM.DM.TW.xx.28	2700-6500K	80	3968 mm	1982 + 1982 mm	2x 15400 lm	2x 95,2 W
R70MM.DM.TW.xx.30	2700-6500K	80	4248 mm	1982 + 2262 mm	2x 16500 lm	2x 102 W
R70MM.DM.TW.xx.32	2700-6500K	80	4528 mm	2262 + 2262 mm	2x 17600 lm	2x 108,8 W
R70MM.DM.TW.xx.34	2700-6500K	80	4810 mm	2262 + 2544 mm	2x 18700 lm	2x 115,6 W
R70MM.DM.TW.xx.36	2700-6500K	80	5091 mm	2544 + 2544 mm	2x 19800 lm	2x 122,4 W
R70MM.DM.TW.xx.38	2700-6500K	80	5371 mm	2544 + 2824 mm	2x 20900 lm	2x 129,2 W
R70MM.DM.TW.xx.40	2700-6500K	80	5653 mm	2544 + 3105 mm	2x 22000 lm	2x 136 W
R70MM.DM.TW.xx.42	2700-6500K	80	5933 mm	2824 + 3105 mm	2x 23100 lm	2x 142,8 W
R70MM.DM.TW.xx.44	2700-6500K	80	6214 mm	3105 + 3105 mm	2x 24200 lm	2x 149,6 W
R70MM.DM.TW.xx.46	2700-6500K	80	6494 mm	3105 + 3385 mm	2x 25300 lm	2x 156,4 W
R70MM.DM.TW.xx.48	2700-6500K	80	6774 mm	3385 + 3385 mm	2x 26400 lm	2x 163,2 W

Lumen Maintenance

L70	B50	>70000 hrs
	B20	>70000 hrs
	B10	>70000 hrs
L80	B50	>70000 hrs
	B20	>70000 hrs
	B10	>70000 hrs
L90	B50	42000 hrs
	B20	42000 hrs
	B10	41000 hrs



Opal cover (standard)
R70.00.000.xx.00



UGR Grid
R7000.00.000.xx.00

UGR Grid

Luminous flux for LEDliner70 with UGR grid(down only) is ca. lower than with standard opal cover.

Please add ".G" to the article number for the UGR Grid version.

Options (not included)

Extend To Fit

art.nr. 650.99.01

In this catalogue, we offer 43 RTG's per profile type, all with fixed lengths. We can customize specific required dimensions by extending the gap between LED modules without esthetical discomfort. Profiles can be extended from 10 to 130mm, as requested.

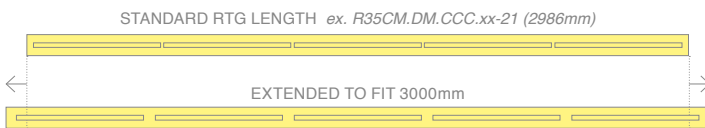
Below, we have made an example on how to order:

Requested: LEDLiner35 Ceiling Mounted 3000mm

- Step 1: Look for the corresponding page in this catalogue > *Page 18*
- Step 2: Look for the nearest (smaller) dimension, closest to 3000mm > *R35CM.DM.CCC.xx-21 (2986mm)*

How to order a LEDLiner35 Ceiling Mounted 3000mm:

- Step 1: Order the nearest (smaller) dimension
R35CM.DM.CCC.xx-21
- Step 2: Order art.nr. 650.99.01 (Extend To Fit) and confirm requested length 3000mm
650.99.01 (3000mm)



Ceiling connecting boxes



Recessed Connecting Box Ø80mm

White Matt Texture	2132.00.01
Black Matt Texture	2132.00.03
Grey 9006 Matt Texture	2132.00.18
Anthracite Matt Texture	2132.00.07
Cut-out: Ø68mm (depth min. 60mm)	
Other colors on request	

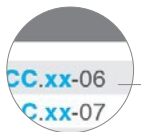


Trimless Connecting Box Ø80mm

White Matt Texture	2133.00.01
Black Matt Texture	2133.00.03
Grey 9006 Matt Texture	2133.00.18
Anthracite Matt Texture	2133.00.07
Cut-out: Ø85mm (depth min. 60mm)	
Other colors on request	

Suspension set 4000mm

Our standard suspension set of 2000mm is included in all suspended luminaires. The following ordering codes are needed for optional 4000mm suspension sets (please order 1x the article number corresponding with the required amount of suspensions)



To find out how many suspensions are required for your profile, check the last 2 figures of your RTG article number:

- ref. 06-13: 2 suspensions required
- ref. 14-24: 3 suspensions required
- ref. 25-30: 4 suspensions required
- ref. 31-48: 6 suspensions required



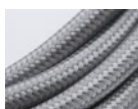
Suspension + White Textile Cable Supply 4000mm

	2 susp.	3 susp.	4 susp.	6 susp.
3x0.75mm ²	2144.02.01	2144.03.01	2144.04.01	2144.06.01
5x0.75mm ²	2145.02.01	2145.03.01	2145.04.01	2145.06.01
7x0.75mm ²	2146.02.01	2146.03.01	2146.04.01	2146.06.01



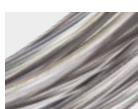
Suspension + Black Textile Cable Supply 4000mm

	2 susp.	3 susp.	4 susp.	6 susp.
3x0.75mm ²	2144.02.03	2144.03.03	2144.04.03	2144.06.03
5x0.75mm ²	2145.02.03	2145.03.03	2145.04.03	2145.06.03
7x0.75mm ²	2146.02.03	2146.03.03	2146.04.03	2146.06.03



Suspension + Grey Textile Cable Supply 4000mm

	2 susp.	3 susp.	4 susp.	6 susp.
3x0.75mm ²	2144.02.18	2144.03.18	2144.04.18	2144.06.18
5x0.75mm ²	2145.02.18	2145.03.18	2145.04.18	2145.06.18
7x0.75mm ²	2146.02.18	2146.03.18	2146.04.18	2146.06.18

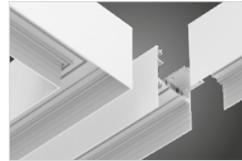


Suspension + Transparent Cable Supply 4000mm

	2 susp.	3 susp.	4 susp.	6 susp.
9x0.75mm ²	2147.02.00	2147.03.00	2147.04.00	2147.06.00

Connectors

Ready To Go profiles can be joined together, using 90° or 180° connectors.



LL70 Connectors

90°	2176.00.00
180°	2177.00.00
Custom made	2178.00.00

When joining your Ready To Go profiles with a 90° connector, take into consideration that both your joined profile lengths will be extended by **28mm** to create the corner. To ensure a sleek design, all 90° corners have only one diagonal cut.

When joining your Ready To Go profiles with a 180° connector, the connected result will have one power supply cable, unless specifically requested otherwise.



Emergency Lighting (Fortimo LED Line / LED Strip)

Philips TrustSight LED emergency kits come complete with battery packs. Designed for use with current-control LED drivers, they operate as a de-centralized emergency lighting solution in the event of a mains voltage failure. TrustSight LED emergency kit is compatible with most LED control gear on the market. They support applications requiring 1 or 3 hours operating time and are CE and ENEC-certified.



Emergency module for linear modules

(Min. length of profile: 1100mm, starting at ref. 08)

1Hr Standard	659.24.LED-1
3Hrs Standard	659.24.LED-3
1Hr DALI	659.26.LED-1
3Hrs DALI	659.26.LED-3

Emergency modules are equipped with self-testing.
DALI version with on command testing, status read-out and additional functionality.

In case of mains failure:

In emergency mode the Philips Trustsight LED Emergency kit acts as a 3W constant power source. This means approx. 507lm for 3000K modules (169lm/W) and approx. 534lm for 4000K modules (178lm/W).

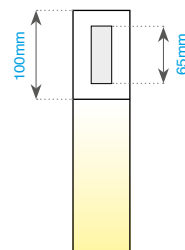
Please apply the correct light output ratio (mentioned on page 66 of our Ready To Go-catalogue) for a more precise estimation of the luminous flux in emergency mode for a specific luminaire.

One emergency module powers one LED module
(280mm/560mm depending on linear configuration).



LED Technology and efficiency improves rapidly.
For the latest technical info please visit www.doxis.be.

ActiLume Daylight- & Movement Sensor



The ActiLume system is a daylight sensor with built-in presence detection. It provides huge energy savings, maximum comfort and is also a tool for fighting climate change on our planet. With ActiLume you get maximum comfort and automatic energy savings of up to 70 - 75%.

ActiLume daylight/presence detection

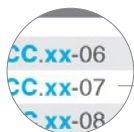
(Min. length of profile: 1100mm, starting at ref. 08)

Stand-alone system 659.00.00
1 sensor integrated in 1 fixture

To accommodate the ActiLume sensor, 100mm will be added to your Ready To Go profile.



Technical info



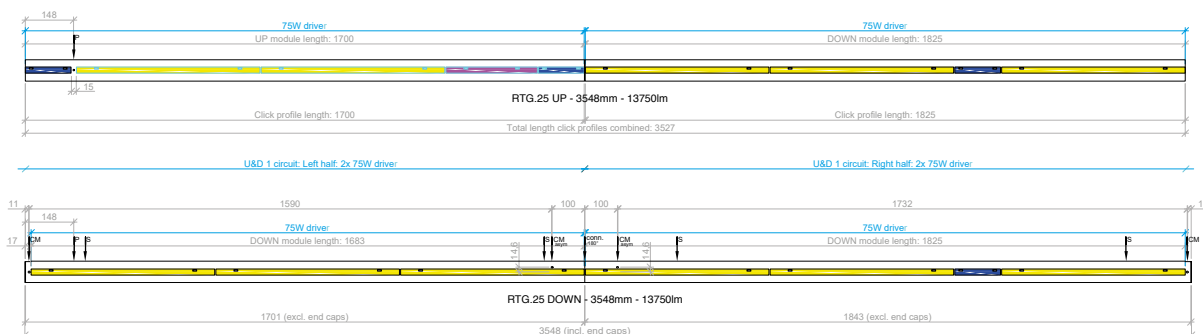
To find out how many suspensions are required for your profile, check the last 2 figures of your RTG article number:

- ref. 06-13: 2 suspension cables, 2 holes for ceiling mounting, or 2 wall connectors.
- ref. 14-24: 3 suspension cables, 3 holes for ceiling mounting, or 3 wall connectors.
- ref. 25-30 (consist of 2 profiles connected by a 180° connector): 4 suspension cables, 4 holes for ceiling mounting, or 4 wall connectors.
- ref. 31-48 (consist of 2 profiles connected by a 180° connector): 6 suspension cables, 6 holes for ceiling mounting, or 6 wall connectors.

Example:

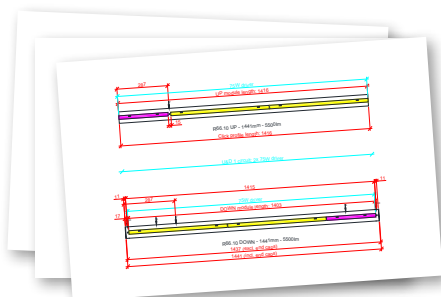
RTG LEDLiner47 Up&Down, ref. 25

(1701mm + 1843mm connected by a 180° connector + end caps = 3548mm in total)



- S Location of the suspension wires
- CM Location of the holes for ceiling mounting
- P Location of the power supply
- conn. 180° Location of the connection between the profiles

- Philips Fortimo LED module 550lm
- Philips Fortimo LED module 1100lm
- Philips Fortimo LED module 2200lm



For a detailed technical drawing of every RTG luminaire, please refer to www.doxis.be.

Installation notice

- Make sure your luminaires are installed by certified electricians.
- Make sure enough fixation points are used.
- Make sure correct plugs and fixation screws are used for different types of ceilings.

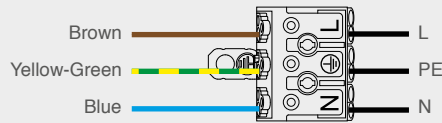
Doxis cannot be held responsible for incorrect installation.

Attention! Aluminium profiles will extend when warming up.

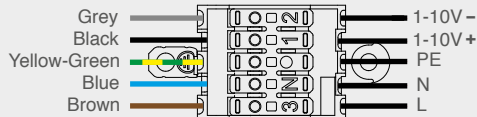
The extension is 0.5mm per meter. This should be taken into consideration for wall mounting, recessed mounting, trimless mounting and ceiling mounting applications. Extension gaps should be provided.

Single circuit

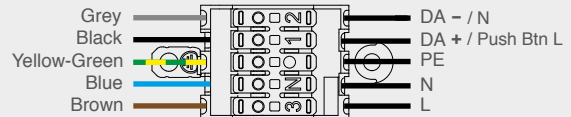
Non dimmable



1-10V dimmable

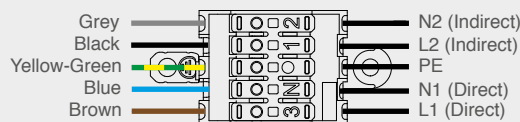


Touch & DALI dimmable

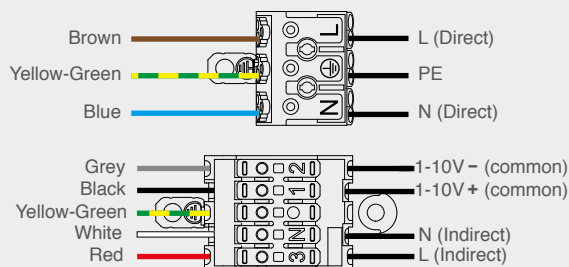


Double circuit direct/indirect 7-wire*

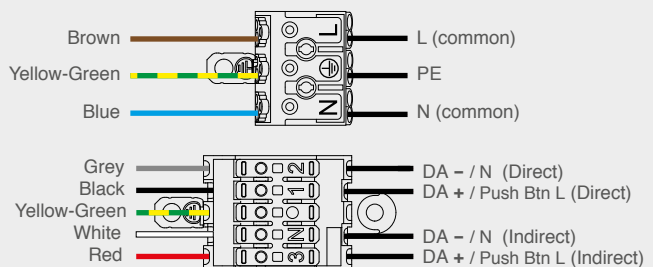
Non dimmable (standard for wall & suspended)



1-10V dimmable (for suspended only*)

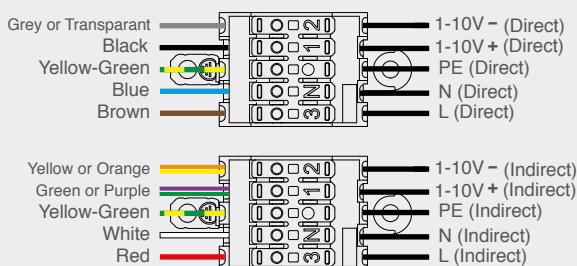


Touch & DALI dimmable (for suspended only*)

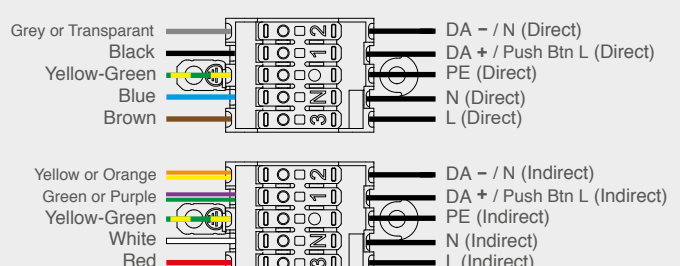


Double circuit direct/indirect 9-wire* (standard for wall mounted profiles, optional for suspended profiles)

1-10V dimmable (standard for wall mounted, optional for suspended*)



Touch & DALI dimmable (standard for wall mounted, optional for suspended*)



Double Circuit Dimming Notice

Suspended profiles w/ 1-10V double circuit direct/indirect dimming:

- 7-wire supply cable (standard):
- 1 common input for 1 dimming level (direct & indirect dim together at the same level)
- 2 separated power supply inputs for separate switching (direct & indirect can be switched independently)

9-wire supply cable (optional): 9x0.75mm² 2000mm transp. cable

2147.00.00

- 2 separated inputs for dimming AND switching (direct & indirect dim at different levels and can be switched independently)

Suspended profiles w/ Touch&DALI double circuit direct/indirect dim:

- 7-wire supply cable (standard):
- 1 common input for continuous power supply
- 2 separated inputs for controlling with DALI or Touch dim. (direct & indirect dim at different levels and can be switched independently)

9-wire supply cable (optional): 9x0.75mm² 2000mm transp. cable

2147.00.00

- 2 separated inputs for continuous power supply
- 2 separated inputs for controlling with DALI or Touch dim. (direct & indirect dim at different levels and can be switched independently)